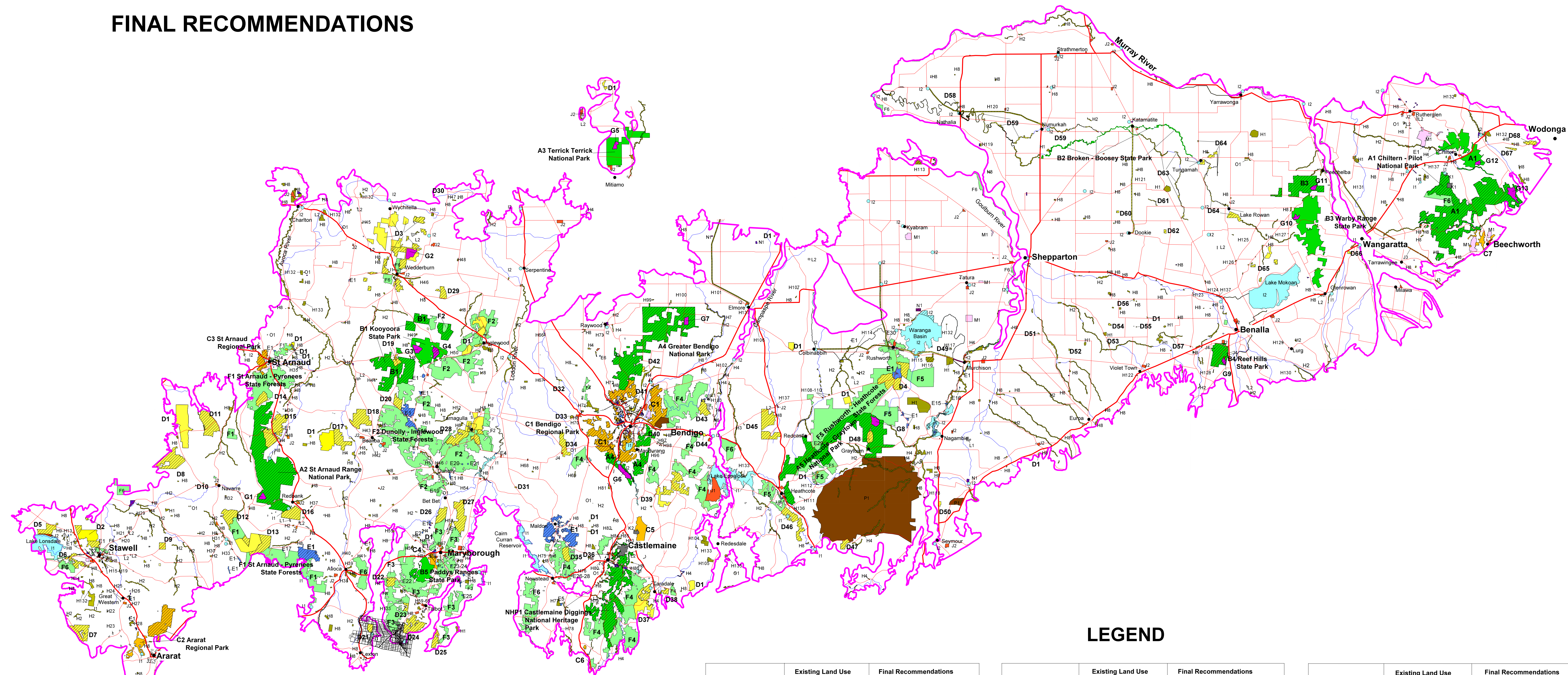


MAP A

ENVIRONMENT CONSERVATION COUNCIL
BOX-IRONBARK FORESTS AND WOODLANDS INVESTIGATION
FINAL RECOMMENDATIONS



LEGEND

	Existing Land Use	Final Recommendations
A. National Parks	Chiltern Box-Ironbark	A1 Chiltern-Pilot
	Terrick Terrick	A2 St Arnaud Range
B. State Parks	Kooyoorra	B1 Kooyoorra
	Warby Range	B2 Broken-Boosey
	Paddys Ranges	B3 Warby Range
		B4 Reef Hills
		B5 Paddys Ranges
C. Regional Parks	Eaglehawk	NHP1 Castlemaine Diggings
	Ararat Hills	
D. Nature Conservation Reserves	Maryborough	
	Mt Alexander	
	Hepburn	
	Beechworth	
E. Historic and Cultural Features Reserves	Historic areas, Historic reserves	D1 various existing reserves
		D2 - D68 recommended nature conservation reserves [see Appendix 11 for a list of reserves]
		E1 various existing reserves
		E2 - E18 recommended historic and cultural features reserves [see Appendix 11 for a list of new reserves]

	Existing Land Use	Final Recommendations
F. State Forest	Hardwood production	F1 St Arnaud-Pyrenees
	State forest	F2 Dunolly-Inglewood
G. Reference Areas	Uncommitted land	F3 Maryborough
	Eucalyptus oil production	F4 Bendigo-Castlemaine
		F5 Heathcote-Graytown
		F6 various state forests
H. Natural Features Reserves	Wildlife reserves [some]	G1 - G13 various reference areas [see Appendix 11 for a list of areas]
	Public land water frontage reserves	H1 various existing wildlife areas
	Streamside reserves	H2 various existing public land water frontages
	Bushland reserves	H3 stream beds and banks
I. Water Production	Water production areas, Water use and regulation	H4 various existing streamside areas [see Appendix 11]
		H5 - H7 recommended streamside areas [see Appendix 11]
J. Community Use Areas	Education areas	H8 various existing bushland areas
	Recreation reserves	H9 - H131 recommended bushland areas [see Appendix 11]

	Existing Land Use	Final Recommendations
K. Plantations	Softwood Production	K1 existing plantations
		K2 Mt Alexander plantation
L. Earth Resources	Stone reserves	L1 mining sites
		L2 stone reserves
M. Services and Utilities	Utilities and survey, Agricultural research	M1 various existing reserves
N. Uncategorised Public Land	Other reserves and public land, Township land	N1 various [existing and recommended]
O. Land not required for public purposes	Agriculture	O1 various
P. Commonwealth land	Commonwealth land	P1 Commonwealth land use proposals

Notes

1. Within the study area, white areas are private land. Coloured areas are public land, except the brown (P1) areas which are Commonwealth land.
2. Public land use categories are described in Part Three of the Final Report; land use recommendations are listed in Appendix 11 and detailed in Part Three. Chapter 13 contains land use proposals for Commonwealth land.
3. Map C in the back pocket provides more detail of the recommended Broken-Boosey State Park (B2) and adjacent areas. Map D in the back pocket is an enlargement showing public land and recommendations around Bendigo. These notes apply to those maps also.
4. Existing reserves in several land use categories have been labelled with the same recommendation number, for example E1 denotes various existing historic and cultural features reserves, and H8 denotes various existing bushland reserves.
5. Recommendation H2 applies to many existing public land water frontage reserves, and to new frontage reserves in townships. Not all are labelled. Recommendation H5 - stream beds and banks - applies to all public watercourses; these are not labelled.

6. Crown land in the former cities of Bendigo and Maryborough and towns of Castlemaine, Stawell and St Arnaud was not previously subject to public land use recommendations. More detailed maps of recommendations in these areas are available from the Environment Conservation Council.
7. Numerous very small parcels subject to recommendations, such as E7-E14 Historic and Cultural Features Reserves at Bendigo, J6 community use areas - parklands and gardens, J5 community use areas - buildings in public use, M1 services and utilities areas and N1 uncategorised public land land, are not able to be shown at this scale. Not all parcels are labelled, and small parcels and their recommended land use category may be difficult to discern. Refer to Chapter 18 and Appendix 11 for relevant recommendations, and contact the Environment Conservation Council if you are unsure about the location of specific recommendations.
8. Many other small blocks exist but are too small to show on this map. These are uncategorised public land unless recommended for another use. Contact the local office of the Department of Natural Resources and Environment for information on such blocks.

Map produced by the ECC, referencing the Department of Natural Resources and Environment (NRE) Corporate GIS Database, June 2001.
NRE retains copyright on these data.