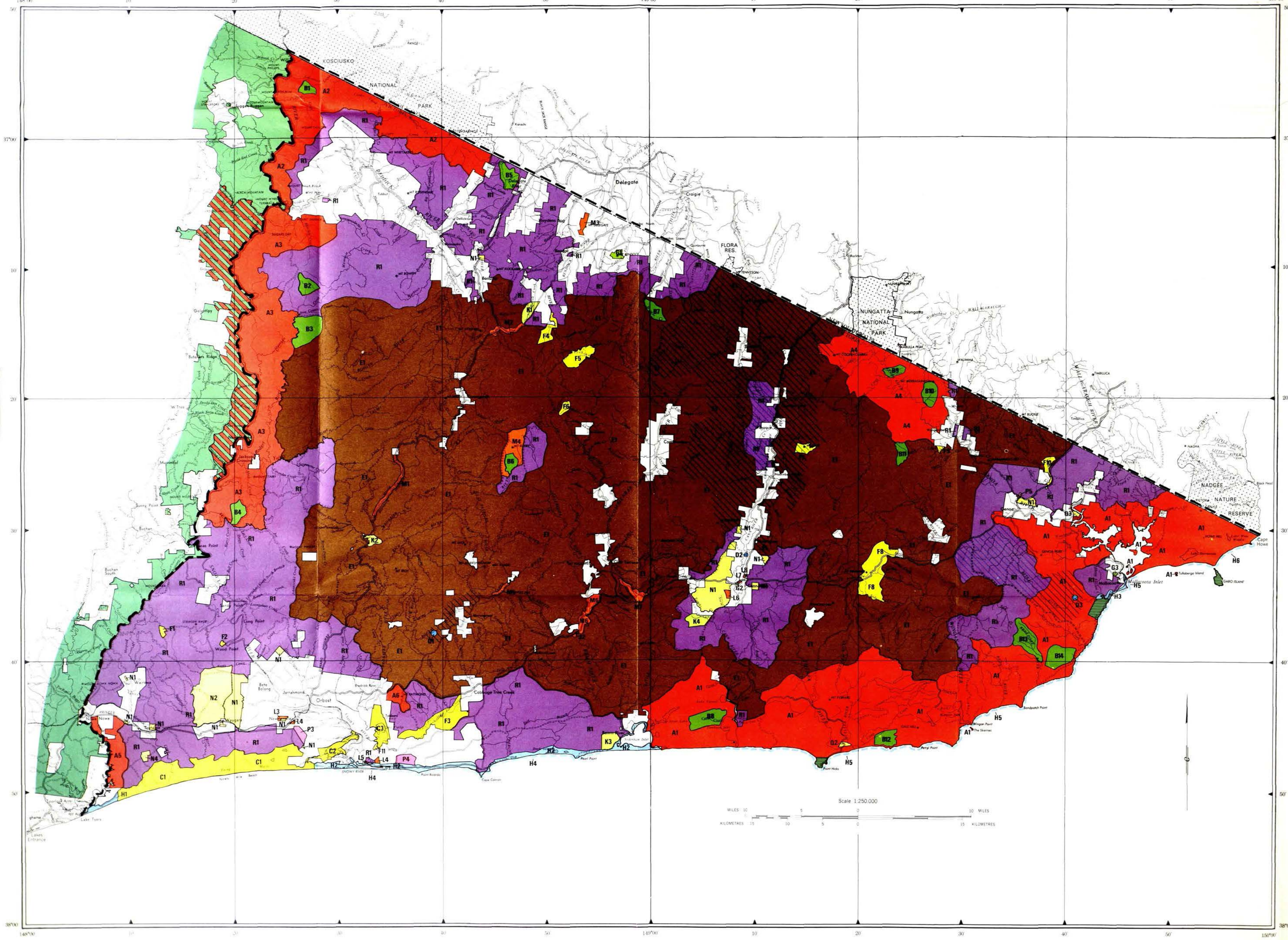


FINAL RECOMMENDATIONS

LAND CONSERVATION COUNCIL
VICTORIA

EAST GIPPSLAND STUDY AREA



PARKS	National	A1 Croajingalong	
	State	A2 Tingaringy	
	Regional	A3 Snowy River	
		A4 Cooracambra	
		A5 Lake Tyers	
		A6 Mt Raymond	
REFERENCE AREAS		B1 Gattamohr Creek	B8 Camp Creek
		B2 Gelantipy Plateau	B9 Yamhulla
		B3 Mountain Creek	B10 Merragunegin
		B4 Zig Zag Creek	B11 Jones Creek
		B5 Concordia Gully	B12 Baawang
		B6 Big River	B13 Bendore River
		B7 Musket Creek	B14 Seal Creek
WILDLIFE RESERVES		C1 Ewing Marsh	
		C2 Lake Corringlo - Lake Wat Wat	
		C3 Lake Curlip	
WATER PRODUCTION		D1 Rocky River	
		D2 Cann River	
		D3 Betka River	
WATER PRODUCTION		E1	
FLORA AND FAUNA	Flora	F1 Muttie Range	F6 Kaska Creek
		F2 Wood Point	F7 Mt Kaye
		F3 Cabbage Tree Creek	F8 Mt Drummer
		F4 Delegate River	F9 Jones Creek
	Flora and Fauna	F5 Goonmirk Rocks	F10 Maramingo Creek
		F11 Brodrick River	
BUSHLAND RESERVES		G1 Mt Bendock	
		G2 Cann River	
		G3 Mallacoota	
THE COAST	Coastal Reserves	H1 Lake Tyers	
		H2 Corringlo Creek to Sydenham Inlet	
		H3 Mallacoota	
	Scenic Coasts	H4 Corringlo Creek to Pearl Point	
		H5 Tamboon Inlet to Mallacoota	
		H6 Cape Howe	
HIGHWAY PARK		J2 McKenzie River	
EDUCATION AREAS		K1 Bidwell	
		K2 Sardine Creek	
		K3 Benn River	
		K4 Serpentine Creek	
RECREATION RESERVES		L3 Newmerella	L6 Tonghi
		L4 Various	L7 Cane River
		L5 Marlo	L8 Cane River
SCENIC RESERVES		M1 Martins Creek	M5 Arte River
		M2 The Gap	M6 Benn River
		M3 Mt Delegate	M7 Eucre Creek
		M4 Mt Ellery	
AGRICULTURE		N1 Various	
		N2 Waygara	
		N4 Tostaree Pilot Farm	
UTILITIES AND SURVEY		P3 Newmerella Sewerage Treatment Works	
		P4 Marlo Aerodrome	
		P5 Maramingo Rubbish Tip	
TOWNSHIP LAND		Q2 Point Hicks	
		Q3 Gipsy Point	
UNCOMMITTED LAND		R1	
			Public land in proclaimed water supply catchments
			Possible extension of Snowy River National Park
			Public land outside the study area
			Commonwealth land (not "public land" as defined in the Land Conservation Act 1970)

BOUNDARY OF STUDY AREA