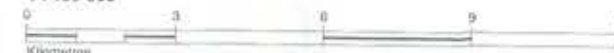


MAP No.1 PUBLIC LAND USE

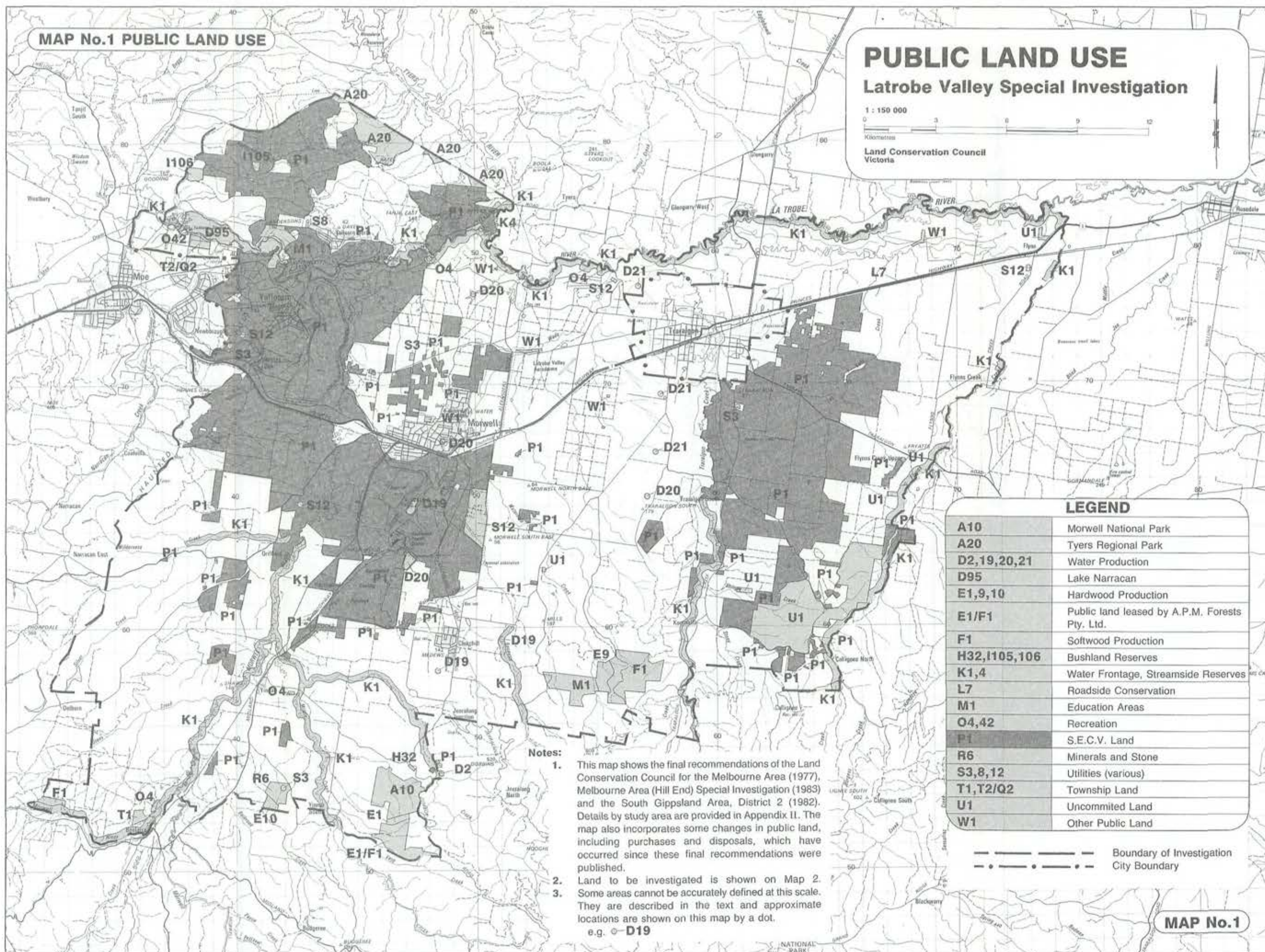
PUBLIC LAND USE

Latrobe Valley Special Investigation

1 : 150 000



Land Conservation Council
Victoria



LEGEND

A10	Morwell National Park
A20	Tyers Regional Park
D2,19,20,21	Water Production
D95	Lake Narracan
E1,9,10	Hardwood Production
E1/F1	Public land leased by A.P.M. Forests Pty. Ltd.
F1	Softwood Production
H32,I105,106	Bushland Reserves
K1,4	Water Frontage, Streamside Reserves
L7	Roadside Conservation
M1	Education Areas
O4,42	Recreation
P1	S.E.C.V. Land
R6	Minerals and Stone
S3,8,12	Utilities (various)
T1,T2/Q2	Township Land
U1	Uncommitted Land
W1	Other Public Land

Notes:

1. This map shows the final recommendations of the Land Conservation Council for the Melbourne Area (1977), Melbourne Area (Hill End) Special Investigation (1983) and the South Gippsland Area, District 2 (1982). Details by study area are provided in Appendix II. The map also incorporates some changes in public land, including purchases and disposals, which have occurred since these final recommendations were published.
2. Land to be investigated is shown on Map 2.
3. Some areas cannot be accurately defined at this scale. They are described in the text and approximate locations are shown on this map by a dot.
e.g. ● D19

— — — — — Boundary of Investigation
- - - - - City Boundary

MAP No.1