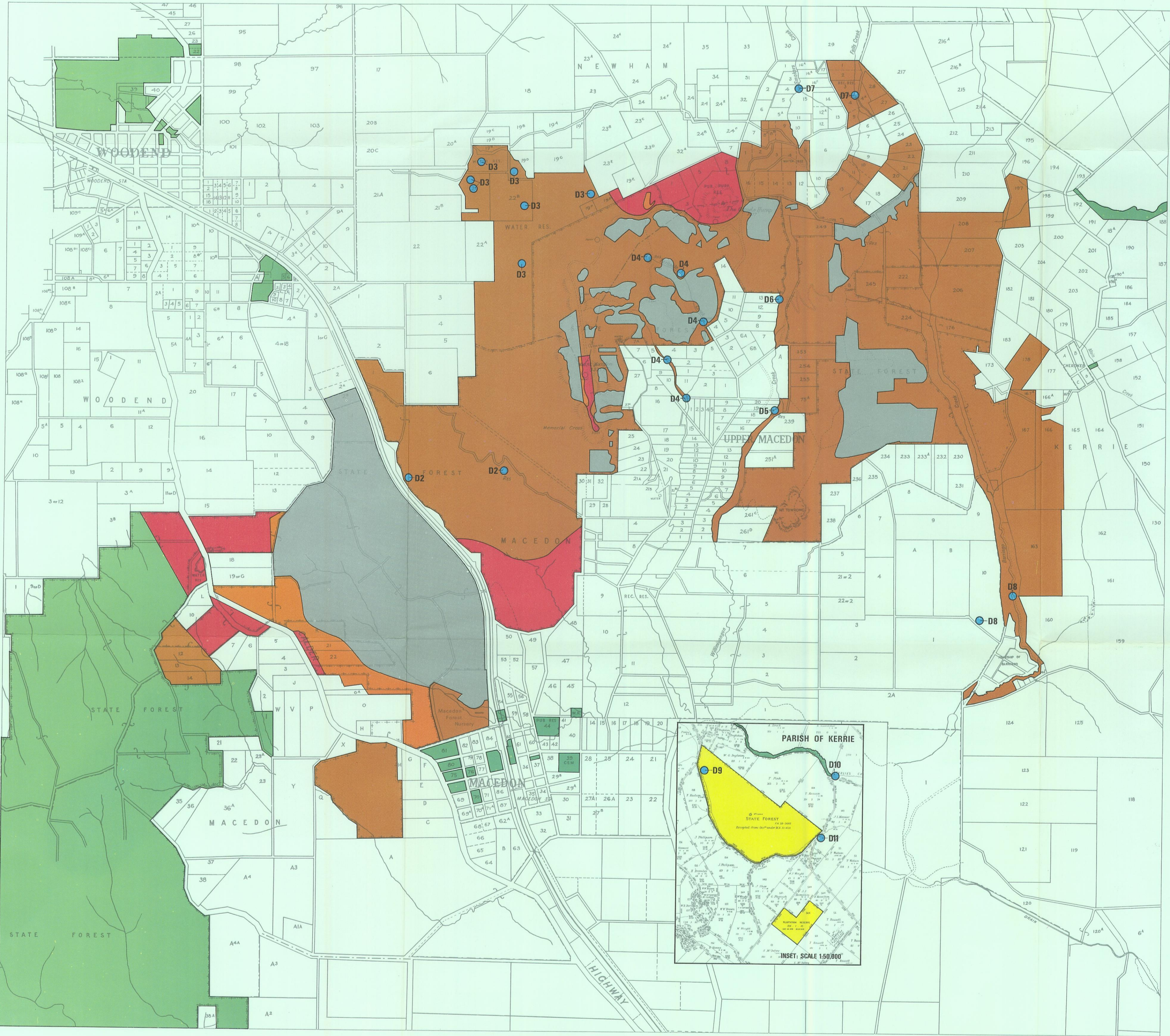


# FINAL RECOMMENDATIONS

## MELBOURNE STUDY AREA

LAND CONSERVATION COUNCIL  
VICTORIA

### MAP B ZONING GUIDELINES FOR MACEDON REGIONAL PARK



- WATER SUPPLY RESERVES D2-D11 - these include all water storages and diversions plus the buffer areas around water storages and diversions as determined under the *Soil Conservation and Land Utilization Act 1958*. It is proposed that they should not form part of the park, but be permanently reserved under section 14 of the *Land Act, 1958* and managed by the appropriate water supply authority.
- ZONE 1: INTENSIVE RECREATION
- ZONE 2: CONSERVATION, RECREATION AND HARDWOOD TIMBER PRODUCTION
- ZONE 3: RECREATION AND SOFTWOOD PRODUCTION
- ZONE 4: NATURE CONSERVATION
- OTHER PUBLIC LAND

Scale 1: 25 000  
METRES 0 500 1000 1500 2000 METRES



NOVEMBER 1976

MAP B