

Metropolitan Melbourne Investigation

CARDINIA

Victorian Environmental Assessment Council

Public land in the City of Cardinia

The Victorian Environmental Assessment Council (VEAC) is undertaking an investigation of public land in 29 municipalities in metropolitan Melbourne. A discussion paper has now been released for public comment, with a final report to be completed by May 2011. See over the page for details on making a submission.

CARDINIA

Cardinia covers 128,105 hectares or about 23 per cent of the Metropolitan Melbourne Investigation area. Almost 24,205 hectares or 19 per cent of the municipality is public land.

The Shire of Cardinia is classified as a growth municipality. Its population in 2006 was about 58,560 people and is projected to reach about 147,985 people in 2026. Cardinia is the largest municipality in metropolitan Melbourne, and has the lowest population density.

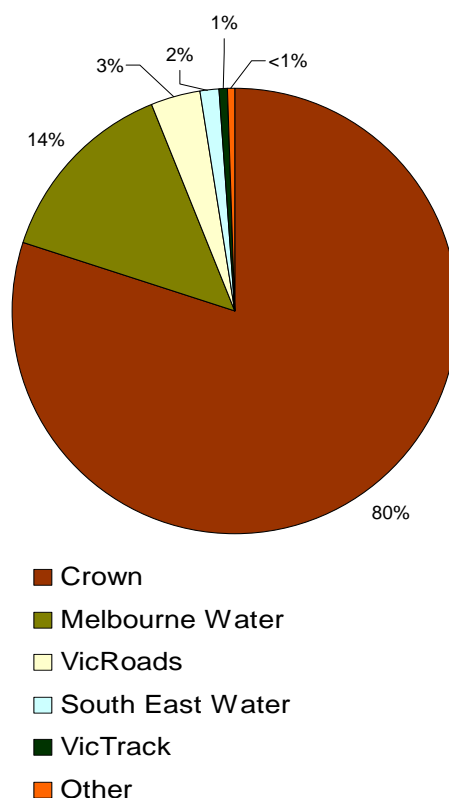
Major uses of public land include parks and reserves and water production and infrastructure. Parts of Bunyip State Park, Kurth Kiln Regional Park and Yarra State Forest and Cardinia Reservoir are in Cardinia. Other uses of public land are community halls, schools and transport infrastructure such as roads.

In northern Cardinia, parks and state forest retain significant areas of native vegetation. These areas provide habitat for a number of common and threatened plants and animals. Cardinia has about 14,133 hectares of public land in conservation parks and reserves (protected areas) including a number of nature conservation reserves and several bushland reserves in the Cockatoo and Gembrook areas. Most of Cardinia's Western Port coastline — in total 16 kilometres — is in the North Western Port Nature Conservation Reserve.

Public land in Cardinia is largely Crown land (right). Melbourne Water owns significant areas of land at Cardinia Reservoir.



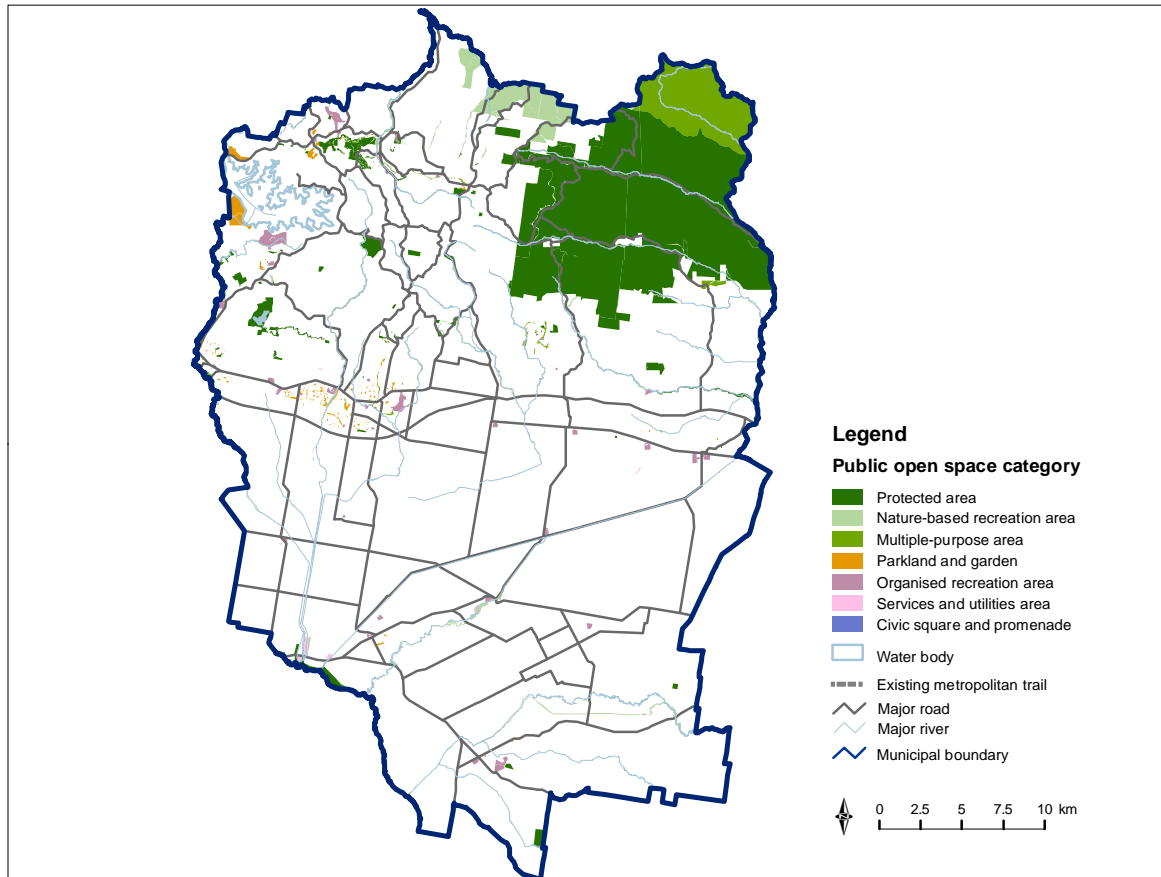
Public land ownership in the City of Cardinia



Public open space in Cardinia

Cardinia has 20,032 hectares of public open space on Crown, public authority and local council owned land, and 342.1 hectares of public open space per thousand people - the highest per capita level in the metropolitan Melbourne. The median for the investigation area is seven hectares per thousand people. Public open space per thousand people in growth municipalities is projected to decrease over time as the population increases.

VEAC has classified public open space in metropolitan Melbourne into different categories according to its primary purpose(s) (below). Public open space in Cardinia is largely in protected areas (such as Bunyip State Park and areas of coastline adjoining Western Port) and nature-based recreation areas such as Yarra State Forest and Kurth Kiln Regional Park.



Do you want to know more about public land or public open space in metropolitan Melbourne?

Detailed descriptions of public land use and public open space in the investigation area are provided in the Metropolitan Melbourne Investigation Discussion Paper, along with discussions of a number of public land issues. For further information or to obtain a copy of the discussion paper contact VEAC on toll free 1800 134 803 or visit our website at www.veac.vic.gov.au.

Do you want to make a submission?

Written submissions are invited on the discussion paper. You may make an online submission via VEAC's website at www.veac.vic.gov.au or send your written submission to VEAC by post, by fax or by email. Submissions can be sent to:

Email: veac@dse.vic.gov.au

Post: Victorian Environmental Assessment Council
Level 6, 8 Nicholson St
East Melbourne VIC 3002

Fax: (03) 9637 8024

Unless otherwise requested, all submissions will be published on the VEAC website.

The closing date for submissions is Monday 20 December 2010.