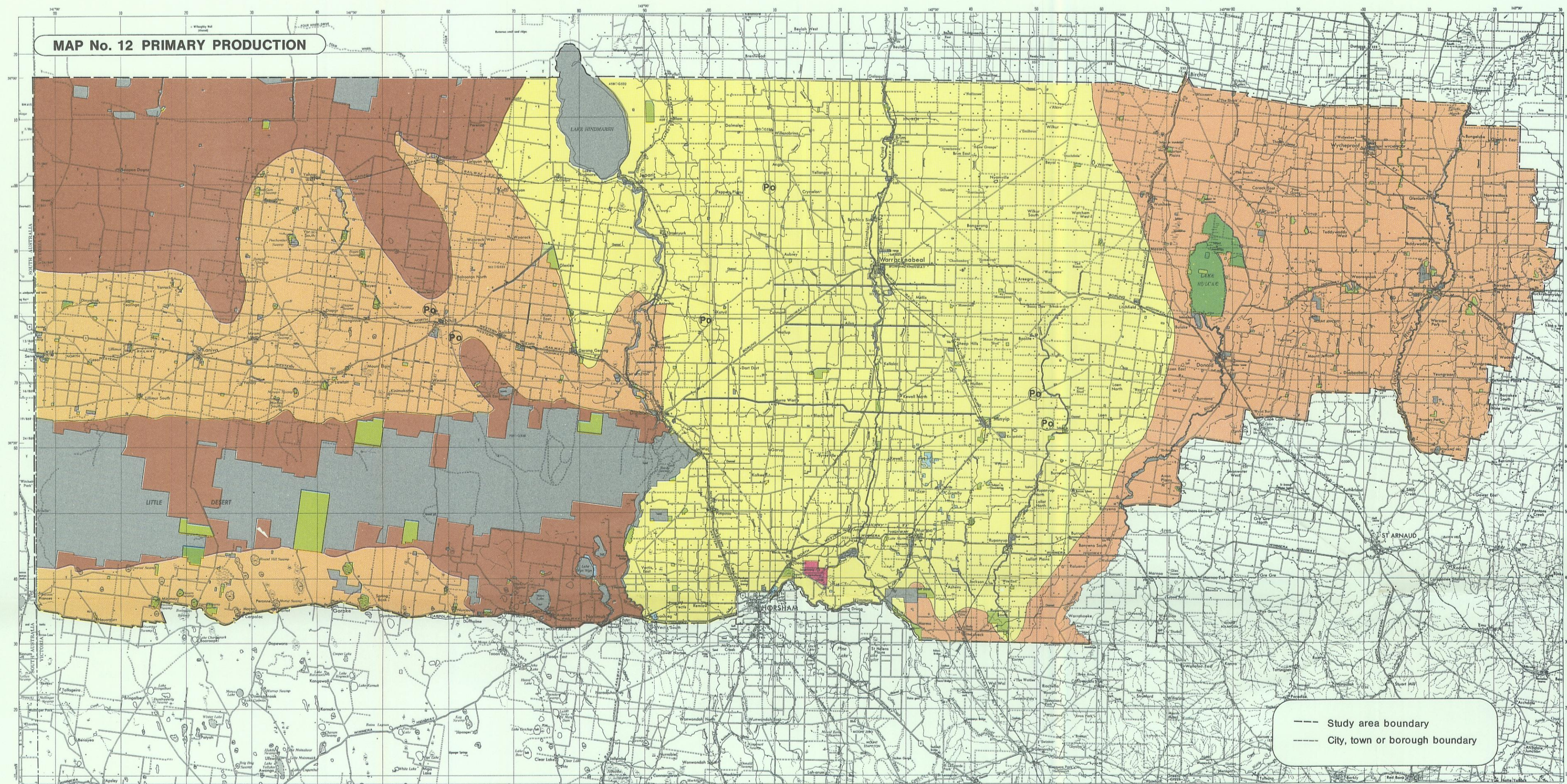


MAP No. 12 PRIMARY PRODUCTION



© Crown (State of Victoria) Copyright 1984. Base map reproduced by permission of the Director, Division of National Mapping, Department of National Development and Energy.

Grey numbered grid lines are 10,000 metre intervals on the Australian Map Grid, zone 54. Grid values are shown in full only at the south-west corner of the map.

PRIMARY PRODUCTION

Wimmera Area

1:500 000

0 10 20 40
Kilometres

Land Conservation Council
Victoria

LEGEND

1. Generalized use of agricultural land by main farming enterprises

- Mainly cropping of wheat, barley and oats. Peas, sunflowers, and rape in some areas. Some sheep for fat lambs and wool production
- Mixed cropping and grazing. Cropping involves wheat, barley, oats, and peas. Some areas of lupins on lighter soils. Grazing is mainly sheep for wool, with some beef cattle.
- Mainly sheep for wool. Limited cropping of wheat, oats, barley, and lupins. Some beef cattle in the Telopea Downs area.
- Irrigation mixed farming - sheep, dairy cattle.
- Po Poultry

Note: Pig farming enterprises are scattered throughout the area.

2. Use of public land for primary production

- Public land under lease (Perpetual swamp or Agricultural College) - these areas may be grazed or cropped.
- Public land licensed for grazing. Some of these areas are cropped.
- Public land grazed under agistment.
- Longenong (Victorian College of Agriculture and Horticulture)
- Other public land - used for recreation, nature conservation, timber production, honey production, and mineral and stone extraction.

--- Study area boundary
--- City, town or borough boundary