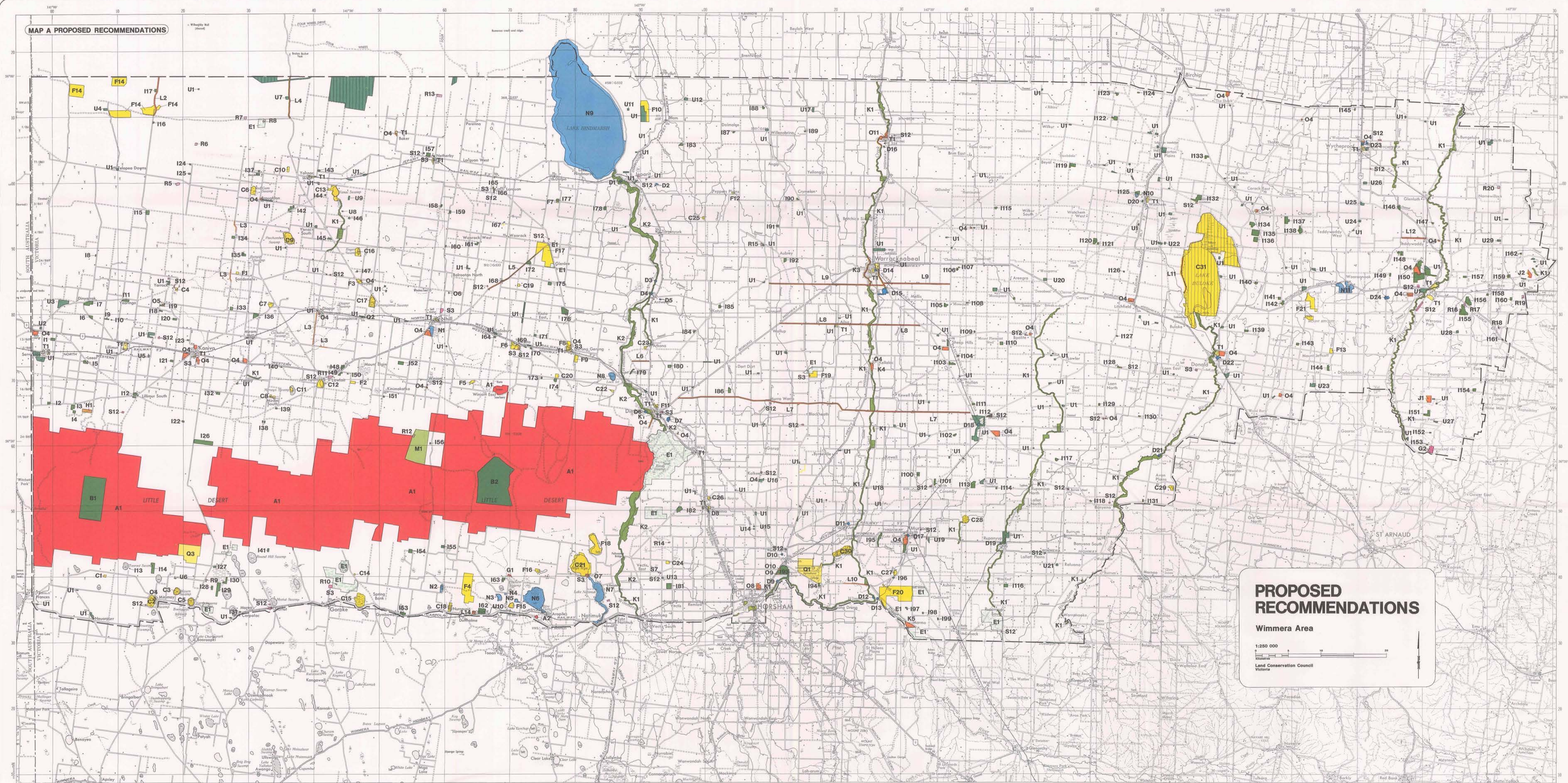


MAP A PROPOSED RECOMMENDATIONS



## PROPOSED RECOMMENDATIONS

Wimmera Area

1:250 000

Land Conservation Council  
Victoria

## LEGEND

NATIONAL PARK	A1 Little Desert
STATE PARK	A2 Addition to Mount Arapiles-Tooon
REFERENCE AREAS	B1 Little Desert (west) B2 Little Desert (east)
WILDLIFE RESERVES	C1-C29 Various
WILDLIFE - CO-OPERATIVE MANAGEMENT AREAS	C30 Darlot Swamp C31 Lake Buloke
WATER SUPPLY AND REGULATION	D1-D24 Various
STATE FOREST	E1 Various
FLORA RESERVES	F1-F13 Various
FLORA AND FAUNA RESERVES	F14-F21 Various
GEOLOGICAL RESERVES	G1 Connan Swamp G2 Yowang Hill

HISTORIC RESERVE	H1 Mooro
BUSHLAND RESERVES	I1-I162 Various
SCENIC RESERVES	J1 Mount Gower J2 Buckrabanyule
PUBLIC LAND WATER FRONTAGE RESERVES	K1 Various K2 Wimmera River <small>Note: Public land water frontage reserves cannot be accurately defined at this scale. Refer to the appropriate Parish plan to determine the boundaries of the reserve and whether the reserve is on one side, or both sides of the stream.</small>
STREAMSIDE RESERVES	K3-K5 Various
ROAD RESERVES	L2-L12 Various
ROADSIDE CONSERVATION HIGHWAY PARK	L14 Jane Duff
EDUCATION AREA	M1 Callabrim
LAKE RESERVES	N1-N11 Various

RECREATION RESERVES	O4 Existing recreation reserves O5-O11 Other recreation reserves
AGRICULTURE	Q1 Longerenong - agricultural research and education Q2 Alienation (refer Map 1) Q3 Perpetual lease
MINERALS AND STONE	R5-R20 Various
UTILITIES AND SURVEY	S3,S7 Various garbage tips S12 Existing utility areas
TOWNSHIP LAND	T1 Various
OTHER RESERVES AND PUBLIC LAND	U1 Various U2-U29 Revegetation areas Public land to be investigated in the Land Conservation Council's review of the Mallee study area

Note: Some reserves cannot be accurately defined at this scale. These reserves are described in the text and approximate locations are shown on this map by a coloured dot. e.g. O-D1

--- Study area boundary  
--- City boundary