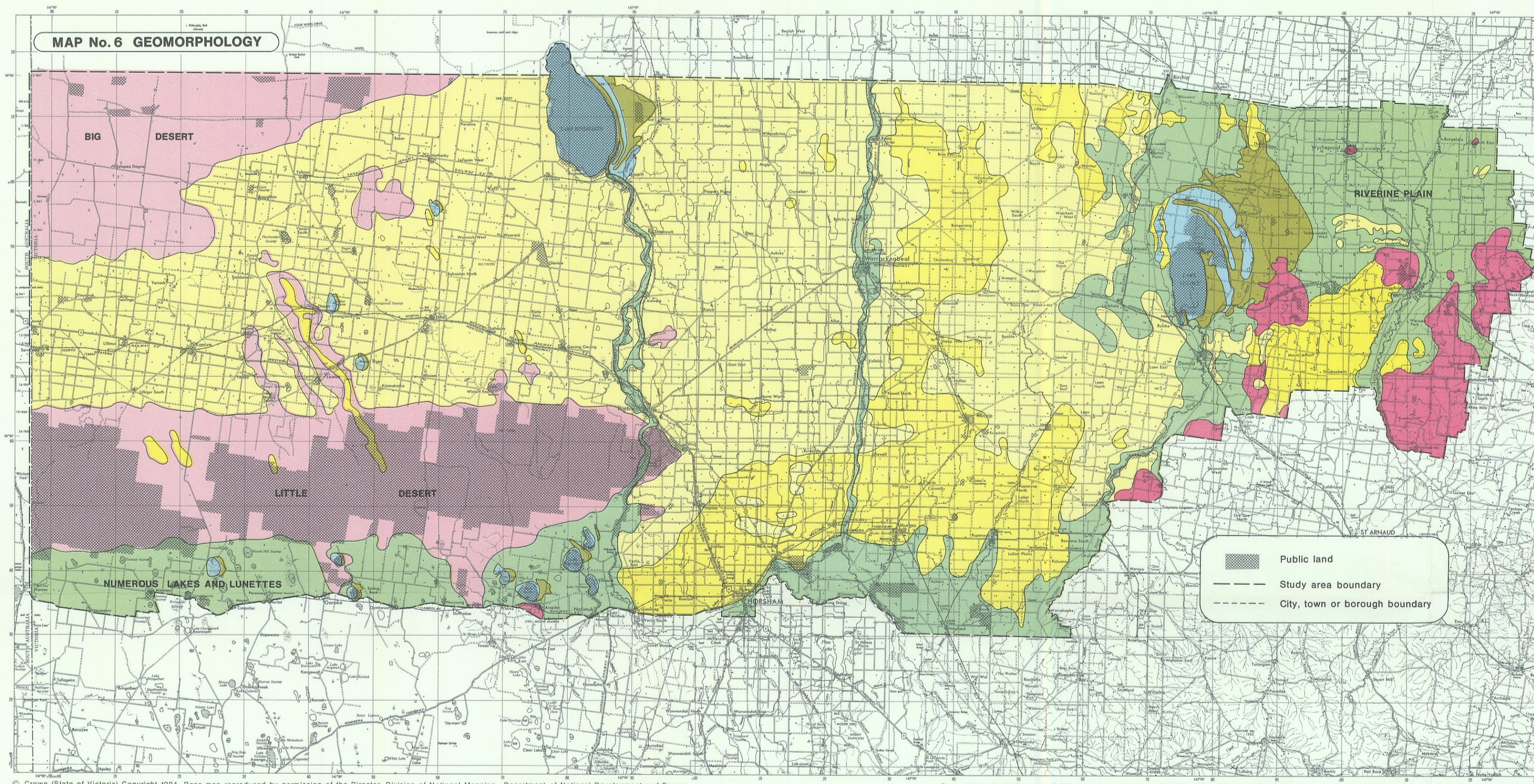


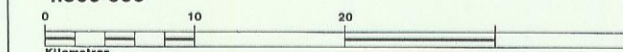
MAP No.6 GEOMORPHOLOGY



GEOMORPHOLOGY

Wimmera Area

1:500 000



Land Conservation Council
Victoria

LEGEND

WESTERN HIGHLANDS



MURRAY BASIN PLAINS

† Ridged Marine Plain

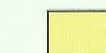


Aeolian Terrain

Irregular sub-parabolic dunes



† Linear dunes



* Lunettes



Alluvial Plains

(Includes riverine plain east of Lake Buloke)



* Lake Floors



Public land

Study area boundary

City, town or borough boundary

Note: This map is simplified. More detail is shown on the geology map.

† East of Yarriambiack Creek boundaries are generalized due to the patchy nature of linear dune and alluvium over the ridged marine plain.

* Only major lakes and lunettes are indicated.