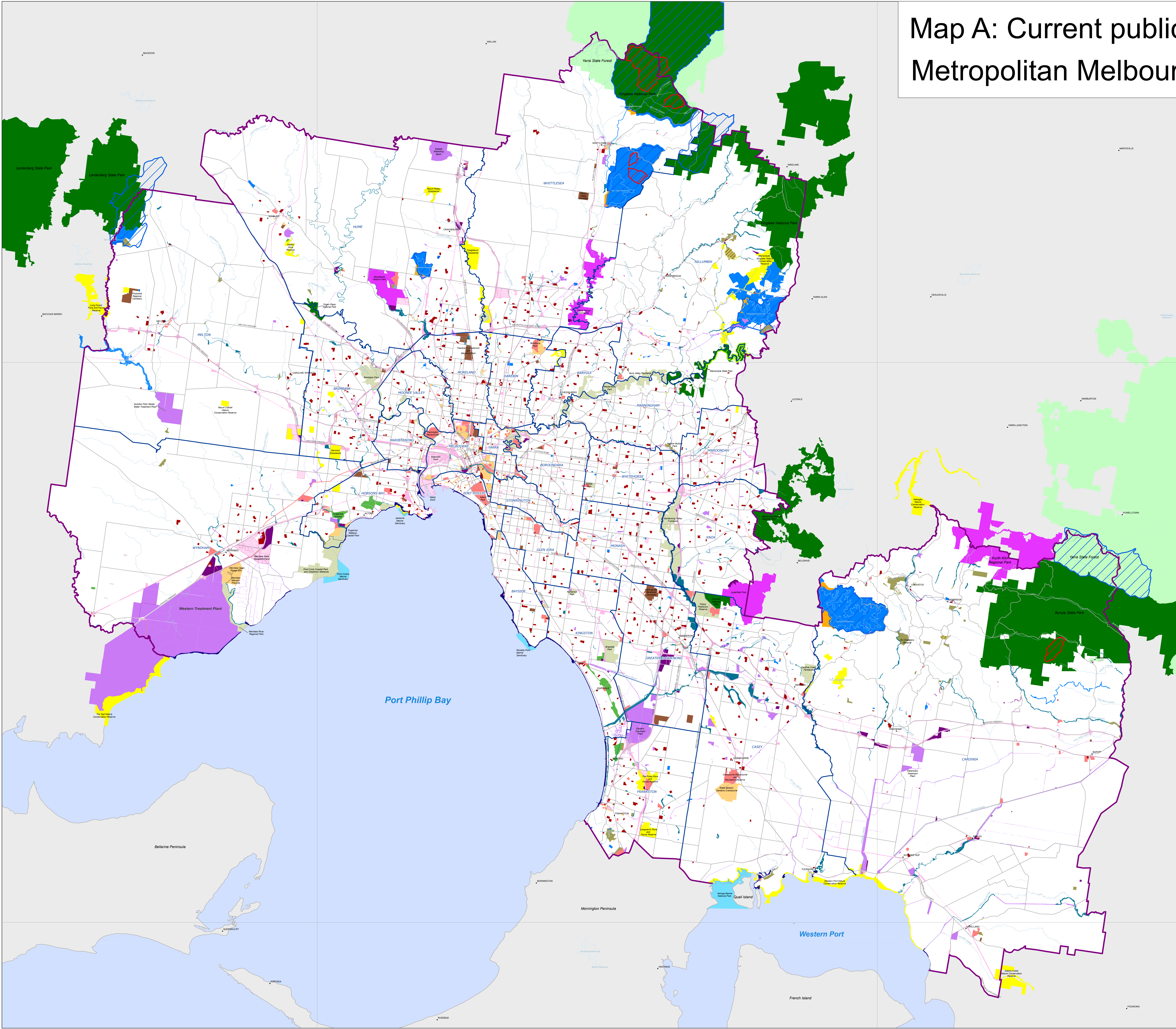


# Map A: Current public land use in the Metropolitan Melbourne Investigation area



## Legend

### Public land use overlay

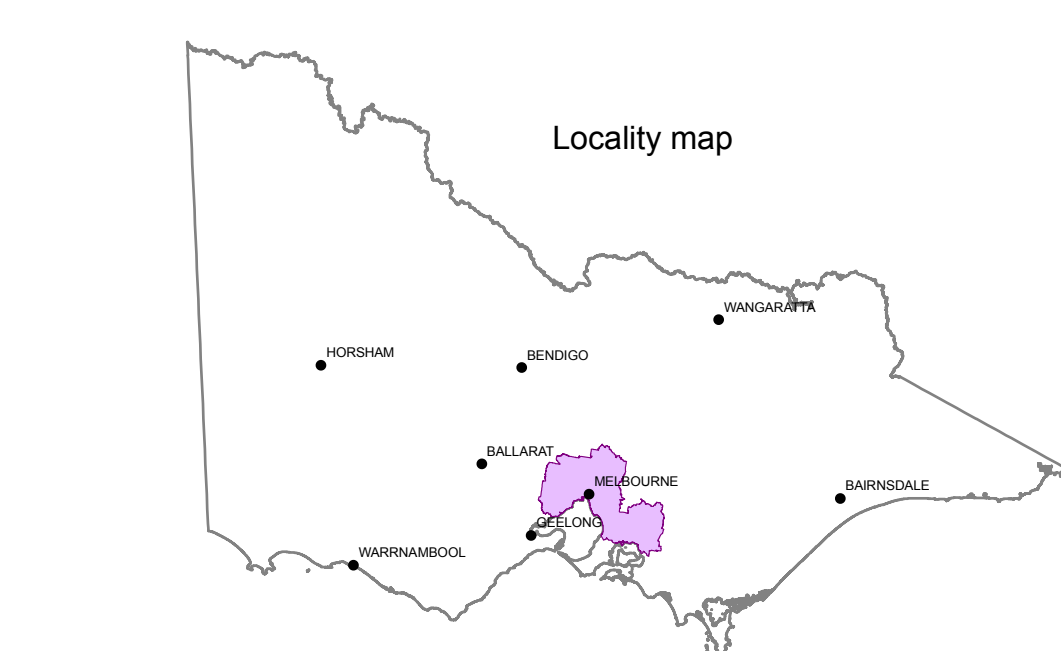
- Reference area
- Proclaimed water supply catchment
- Heritage river

### Public land use

- National park and state park
- Marine national park and marine sanctuary
- Trust for Nature protected area
- Nature conservation reserve
- Regional park
- Metropolitan park
- State forest
- Natural features reserve
  - Natural and scenic features area, bushland area, streamside area
  - Stream frontages (including beds and banks)
  - Wildlife area, wetland, other natural features reserve
- Coastal reserve and coastal waters reserve
- Water production area
- Historic and cultural features reserve
- Community use area
  - Parkland and garden
  - Recreation area
  - Building in public use
  - Reservoir park

- Services and utilities area
  - Road, railway
  - Hospitals, public offices, justice
  - Cemeteries
  - Water and sewerage services
  - Other services and utilities area
- Uncategorised public land

- Water body
- Land outside investigation area
- Major road
- Major river
- Investigation area boundary
- Municipal boundary



- Notes:
- This map is based on the VicMap digital Crown land parcel layer. Data for government freehold land was supplied by public authorities. Small land parcels (generally less than one hectare) may not be visible at this map scale. Some parcels are not labelled and small areas may be difficult to distinguish. Larger areas of public land contiguous with the investigation area are shown for context.
  - This map depicts current public land use only. Chapter 7 of the final report contains some recommendations for changes to current public land use and maps of the recommended changes.
  - The public land use categories shown on this map are described in chapter 7 of the final report. Recreation trails and rifle and shooting ranges are shown as Community use area-Recreation area. Some government roads and public housing land are not shown.
  - Areas of coastal waters reserve are included in the investigation area where municipal boundaries extend beyond the low water mark.
  - The investigation area and municipal boundaries bordering Port Phillip Bay and Western Port are not shown as they would obscure coastal reserves.
  - The finer detail on this map can be viewed at [www.vic.vic.gov.au](http://www.vic.vic.gov.au)

Disclaimer:  
This map may be of assistance to you but the State of Victoria and its employees do not guarantee that the map is without flaw of any kind or is wholly appropriate for your particular purpose and therefore disclaims all liability for any error, loss or any consequence which may arise from you relying on any information on this map.

© The State of Victoria, Victorian Environmental Assessment Council 2011

0 2.5 5 10 15 20 km

