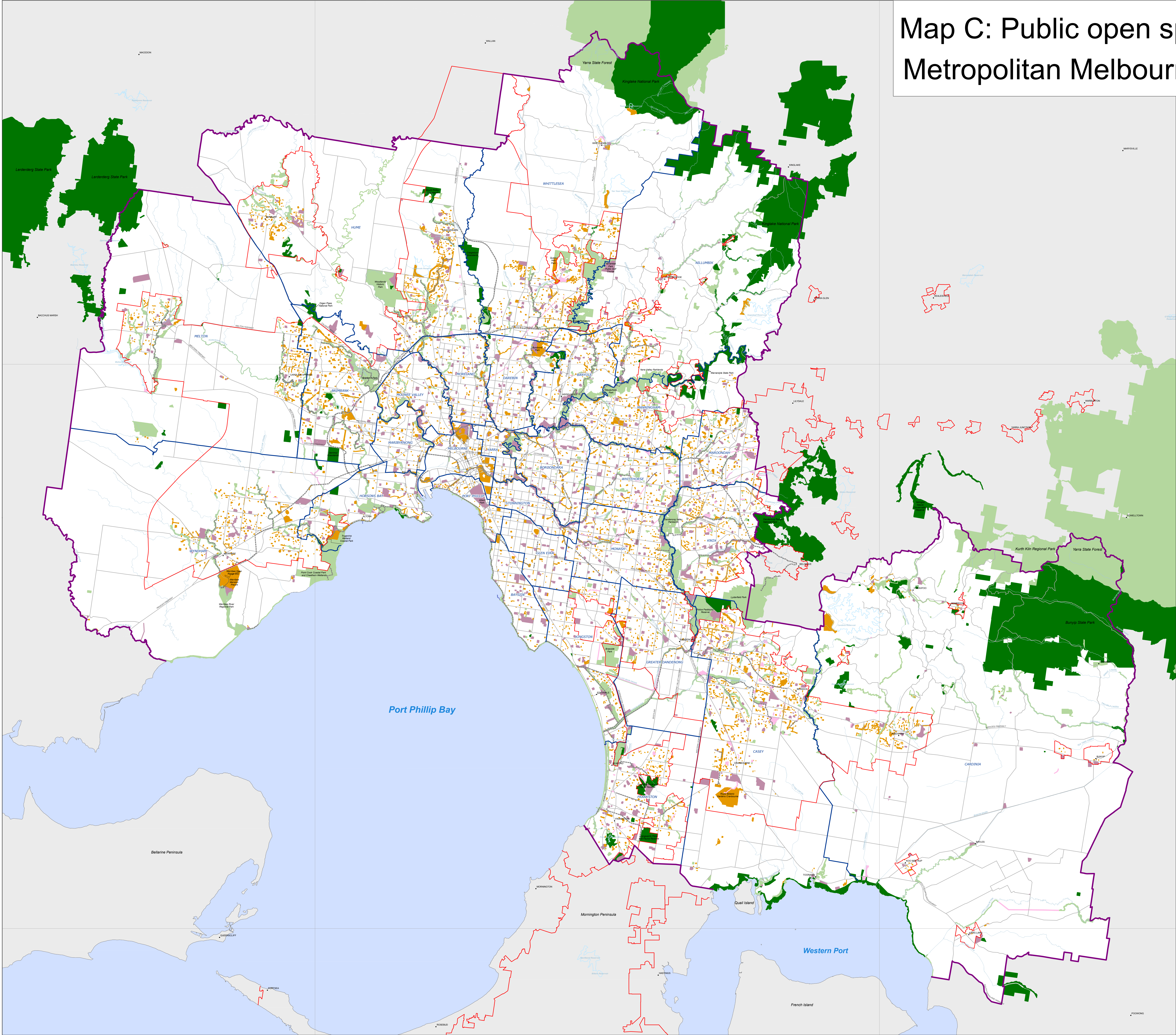


Map C: Public open space categories in the Metropolitan Melbourne Investigation area



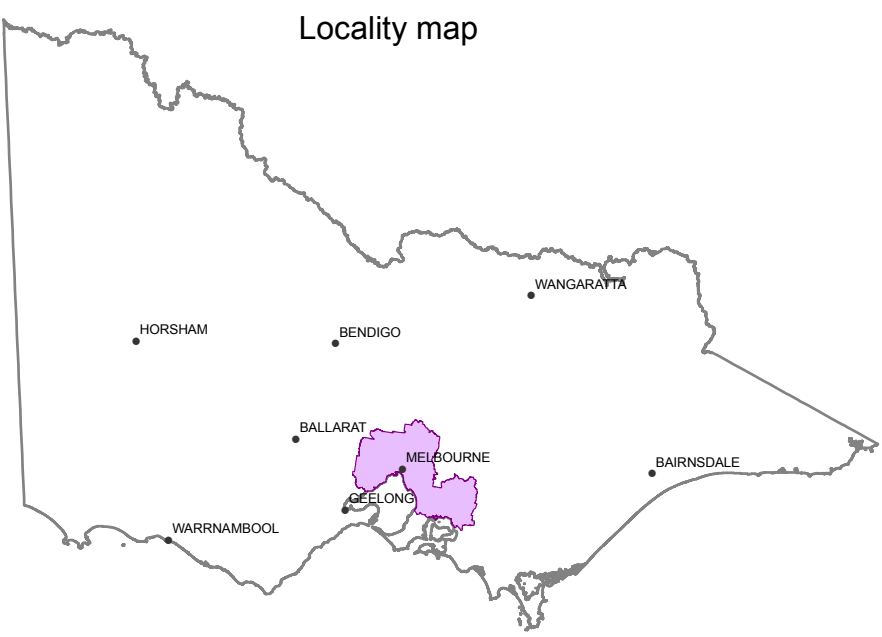
Legend

Public open space category

- Protected area
- Natural and semi-natural area
- Parkland and garden
- Organised recreation area
- Services and utilities area
- Civic square and promenade

- Water body
- Urban Growth Boundary
- Land outside investigation area
- Existing metropolitan trail network
- Major road
- Major river
- Investigation area boundary
- Municipal boundary

CARDINA



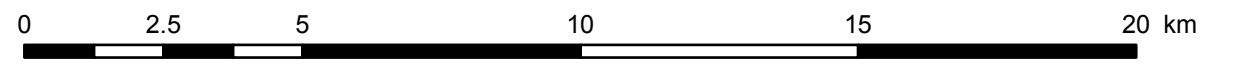
Notes:

1. This map is based on the VicMap Digital Crown land parcel layer. Data for government freehold land was supplied by public authorities. Data for the metropolitan trail network was supplied by Parks Victoria. Urban Growth Boundary data was supplied by the Department of Planning and Community Development. Various local councils provided a range of information about public open space on their freehold land. Larger areas of public land contiguous with the investigation area are shown for context.
2. The public open space categories shown on this map are described in chapter 5 of the final report.
3. Small land parcels (generally less than one hectare) may not be visible at this map scale.
4. Areas of coastal water reserve are included in the investigation area where municipal boundaries extend beyond the low water mark.
5. The investigation area and municipal boundaries bordering Port Phillip Bay and Western Port are not shown as they would obscure coastal reserves.
6. The finer detail on this map can be viewed at www.veac.vic.gov.au

Disclaimer:

This map may be of assistance to you but the State of Victoria and its employees do not guarantee that the map is without flaw of any kind or is wholly appropriate for your particular purpose and therefore disclaims all liability for any error, loss or any consequence which may arise from you relying on any information on this map.

© The State of Victoria, Victorian Environmental Assessment Council 2011



GRID INTERVAL 60 km
Map projection: Vicgrid of Australia - Vicgrid94

