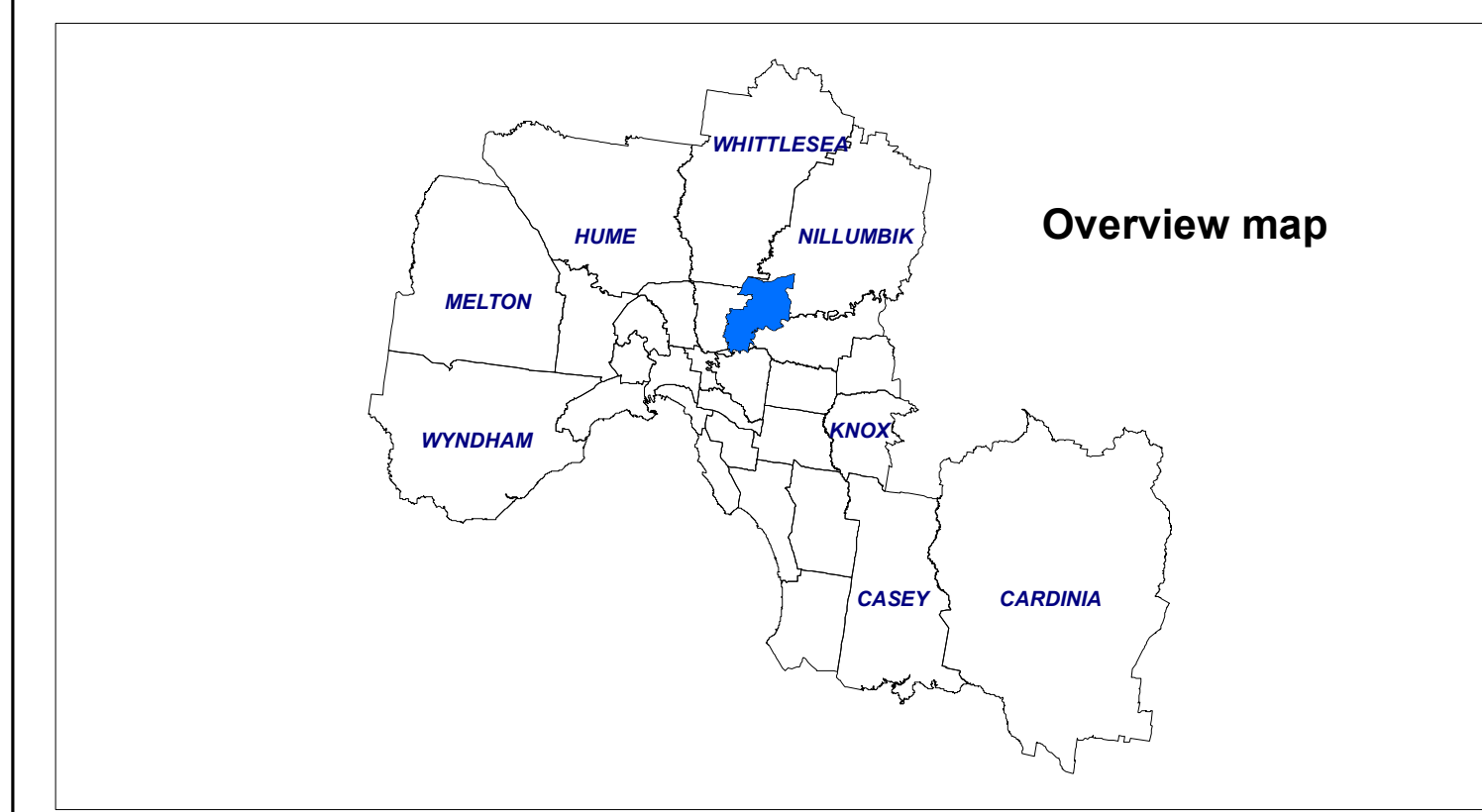
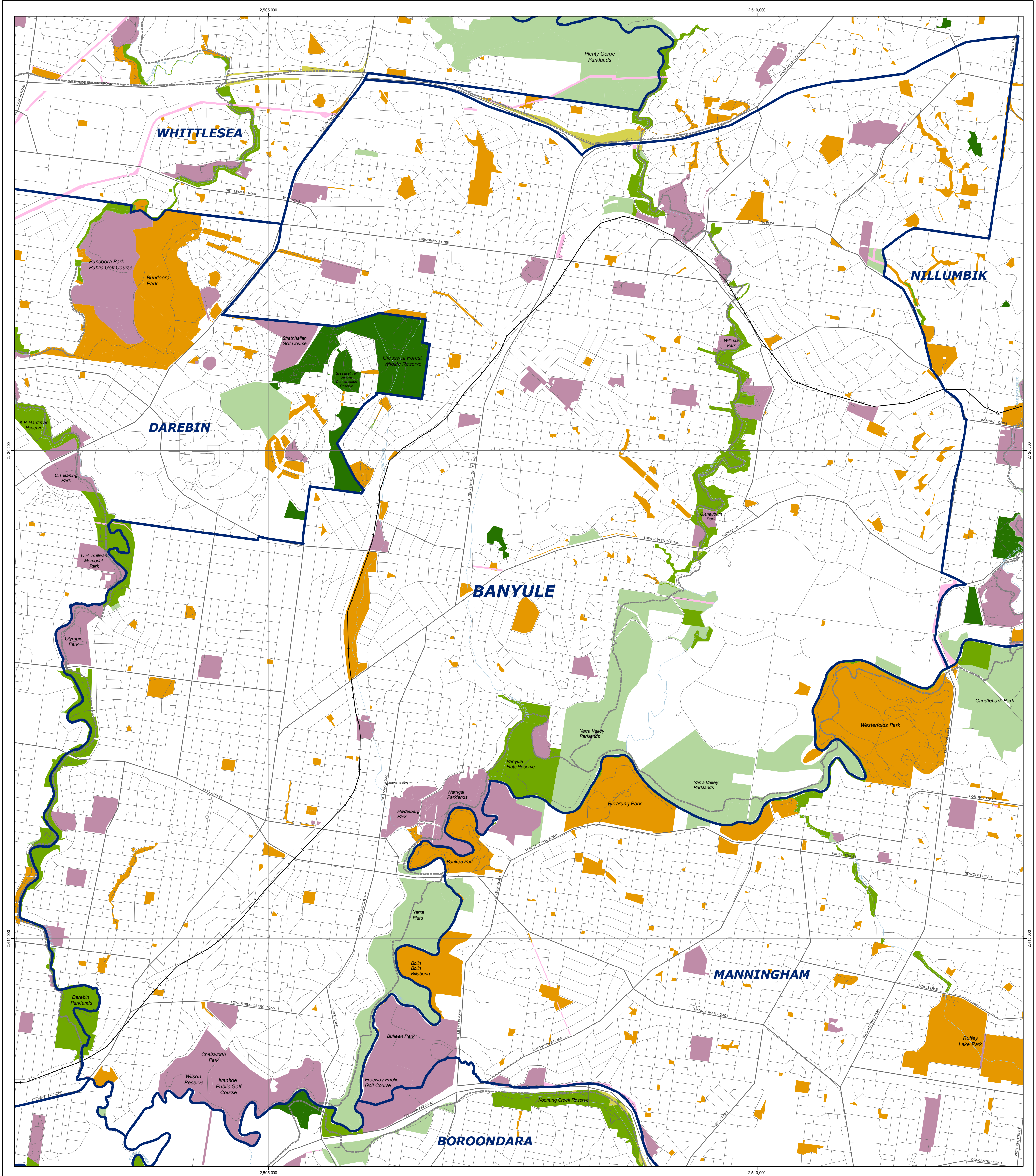


Public open space categories

Metropolitan Melbourne Investigation
CITY of BANYULE



Legend

Public open space category

- | | | | |
|--|------------------------------|--|-------------------------------------|
| | Protected area | | Major road |
| | Nature-based recreation area | | Minor road |
| | Multiple-purpose area | | Railway lines |
| | Parkland and garden | | Major river |
| | Organised recreation area | | Existing metropolitan trail network |
| | Services and utilities area | | Municipal boundary |
| | Civic square and promenade | | Water body |
| | | | Land outside investigation area |

Notes:
1. This map is based on the VicMap Digital Crown land parcel layer. Data for Government freetold land was supplied by public authorities. Data for the metropolitan trail network was supplied by Parks Victoria. Urban growth boundary data was supplied by the Department of Planning and Community Development.
2. The public open space categories shown on this map are described in chapter 6 of the discussion paper.
3. Larger areas of public land contiguous with the investigation area are shown for context.
4. The finer detail on this map can be viewed at www.veac.vic.gov.au.

Disclaimer:
This map may be of assistance to you but the State of Victoria and its employees do not guarantee that the map is without flaw of any kind or is wholly appropriate for your particular purposes and therefore disclaims all liability for any error, loss or any consequence which may arise from you relying on information on this map.

© The State of Victoria, Victorian Environmental Assessment Council 2010

0 0.25 0.5 1 km

N

GRID INTERVAL: 5,000 METRES
Map projection: Vicgrid of Australia - Vicgrid

VEAC Victorian Environmental Assessment Council
State Government Victoria