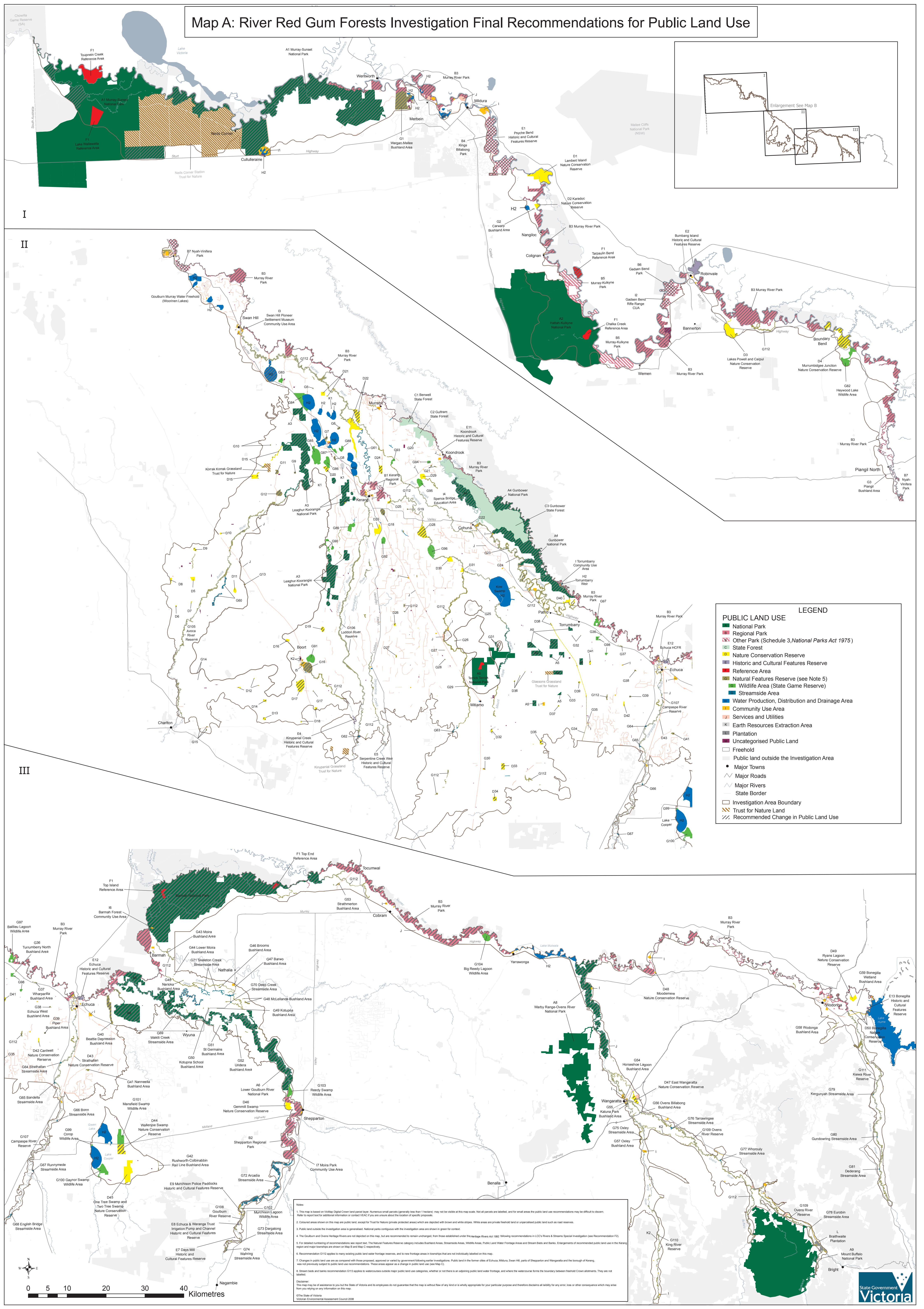


Map A: River Red Gum Forests Investigation Final Recommendations for Public Land Use



PUBLIC LAND USE

- National Park
- Regional Park
- Other Park (Schedule 3, National Parks Act 1975)
- State Forest
- Nature Conservation Reserve
- Historic and Cultural Features Reserve
- Reference Area
- Natural Features Reserve (see Note 5)
- Wildlife Area (State Game Reserve)
- Streamsides Area
- Water Production, Distribution and Drainage Area
- Community Use Area
- Services and Utilities
- Earth Resources Extraction Area
- Plantation
- Uncategorised Public Land
- Freehold
- Public land outside the Investigation Area
- Major Towns
- Major Roads
- Major Rivers
- State Border
- Investigation Area Boundary
- Trust for Nature Land
- Recommended Change in Public Land Use

LEGEND

Notes:

- This map is based on the Victorian Digital Crown land parcel layer. Numerous small parcels (generally less than 1 hectare) may not be visible at this map scale. Not all parcels are labeled, and for small areas the public land use recommendations may be difficult to discern. Refer to the Victorian Digital Crown land parcel layer for more information.
- Coloured areas shown on this map are public land, except for Trust for Nature (green) and private land (white). White areas are private freehold land or unincorporated public land such as road reserves.
- Public land outside the investigation area is generalised. National parks contiguous with the investigation area are shown in green for context.
- The Goulburn and Ovens Heritage Rivers are not depicted on this map, but are recommended to remain unchanged, from those established under the Heritage Rivers Act 1982. Showing recommendations in LCC's Rivers & Streams Special Investigation (see Recommendation F2).
- For detailed numbering of recommendations see report text. The Natural Features Reserve category includes Bushland Areas, Streamside Areas, Wildlife Areas, Public Land Water Frontage Areas and Stream Beds and Banks. Enlargements of recommended public land use in the Kerang region and major townships are shown on Map B and Map C respectively.
- Recommendation G12 applies to many existing public land water reserves, and to new frontage areas in townships that are not individually labeled on this map.
- Changes in public land use are compared with those proposed, approved or voted by government following earlier investigations. Public land in the former cities of Echuca, Mildura, Swan Hill, parts of Shepparton and Wangaratta and the borough of Kerang, were not previously subject to public land use recommendations. These areas appear as a change in public land use (see Map G).
- Stream beds and banks recommendations G13 applies to watercourses outside major public land use categories, whether or not there is an adjoining public land water frontage, and where the watercourse forms the boundary between freehold Crown allotments. They are not labeled.

Disclaimer:
This map may be of assistance to you but the State of Victoria and its employees do not guarantee that the map is without flaw of any kind or is wholly appropriate for your particular purpose and therefore disclaims all liability for any error, loss or other consequence which may arise from you relying on any information on this map.

© 2018 State of Victoria
Victorian Environmental Assessment Council 2008