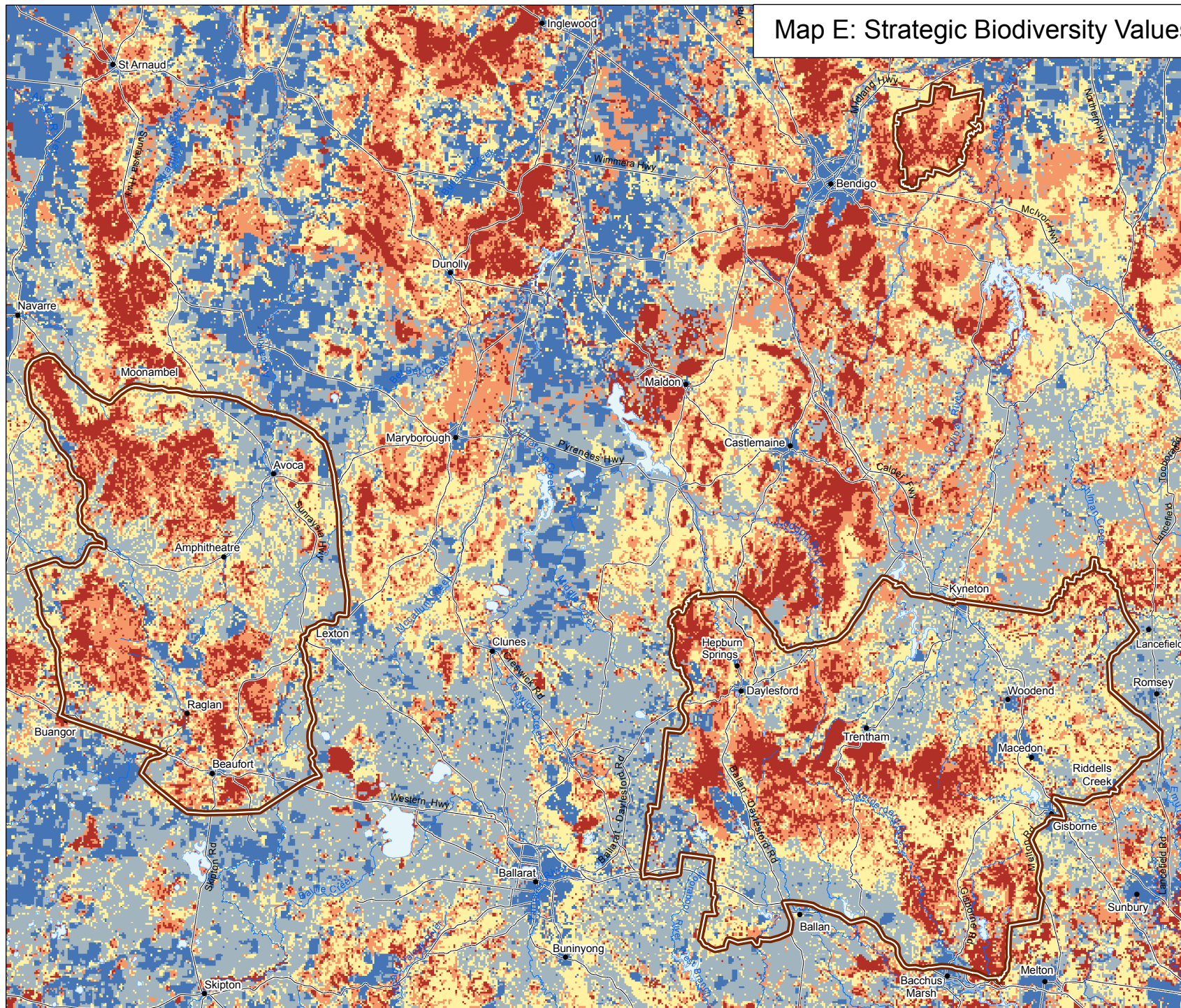
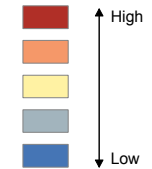


Map E: Strategic Biodiversity Values - statewide analysis



Relative contribution to conservation of Victoria's biodiversity (based on a combination of scarcity, habitat condition and connectivity).



Investigation area boundary

Major road

Major waterway or waterbody

Notes
The Arthur Rylah Institute for Environmental Research prepared this statewide analysis of Strategic Biodiversity Values in 2016 for a variety of purposes. It shows the relative importance of locations on all land tenures for Victoria's rare or threatened vascular plants and vertebrate animals. An outline of the methodology is included in appendix 4.

Disclaimer:
This map may be of assistance to you but the State of Victoria and its employees do not guarantee that the map is without flaw of any kind or is wholly appropriate for your particular purpose and therefore disclaims all liability for any error, loss or any consequence which may arise from you relying on any information on this map.

© The State of Victoria, Victorian Environmental Assessment Council 2018

