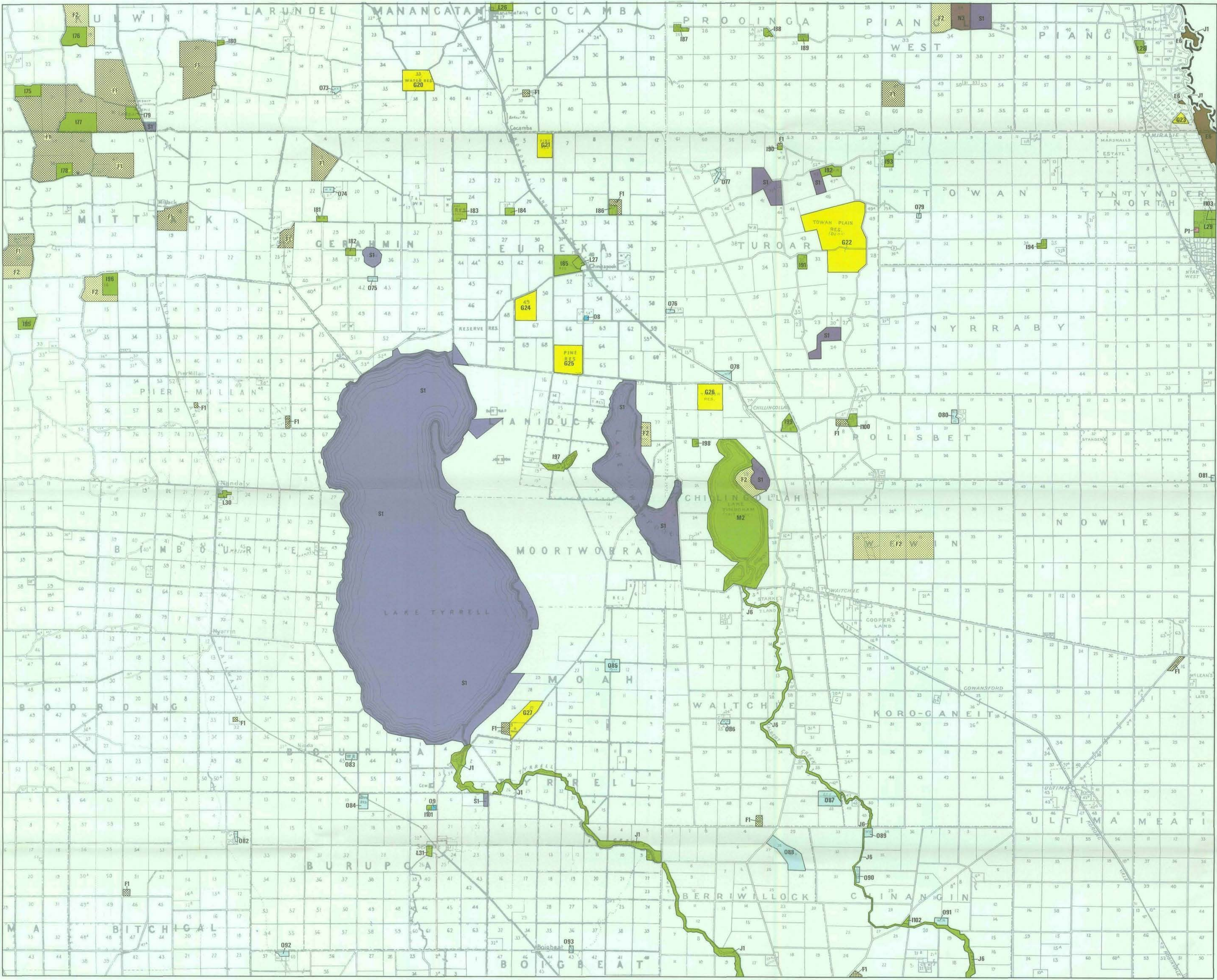


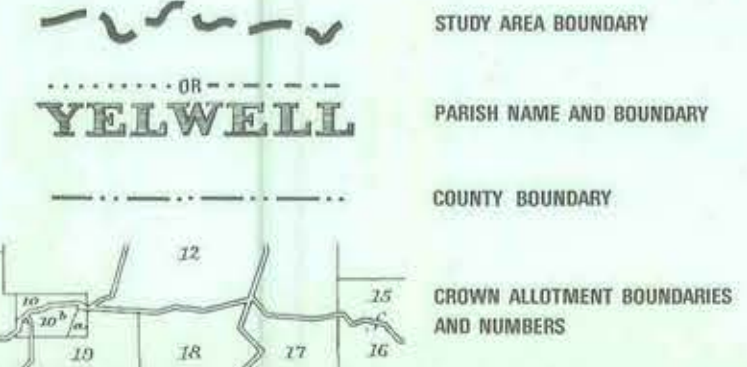
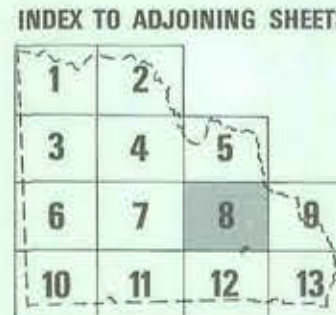
PROPOSED RECOMMENDATIONS

LAND CONSERVATION COUNCIL
VICTORIA

MALLEE STUDY AREA



PARKS	National	A1	Wyperfeld	A2	Hattah-Kallakee
	State	A3	Pink Lakes		
	Regional	A4	Lake Albury		
WILDERNESS		B1	Big Desert		
REFERENCE		C1	Millawa	C7	Purys
		C2	Lake Wella Walls	C8	O'Sullivan Lockout
		C3	Sunset	C9	Wonga Lake
		C4	Chalk Creek	C10	Outback
		C5	Kia	C11	Telopea Downs
		C6	Wymint		
WILDLIFE		D1	Kings Billabong	D10	The Marshes
		D2	Lakes Powell and Cargill	D11	Sheepwash Creek
		D3	Woodward	D12	Stevenson Swamp
		D4	Wade	D13	Wandella
		D5	Bronzewing	D14	Lake Murphy
		D6	Red Bull	D15	Lake Yando
		D7	Lake Lallert	D16	Reddy Lakes
		D8	Tokam Lake	D17	Little Lake Charn
		D9	Valliera		
FLORA AND FAUNA		G1-G32	Various		
HARDWOOD PRODUCTION		E1	Potterswagone Creek & Wajoolia Island	E5	Boundary Bend to Macredie Island
		E2	Abbotsford Bend to Butte Bend	E6	Hyak, Vindera
		E3	Lambert Island to Graces Bend	E7	Wandella, Appin, Leaghar
		E4	Liparoo to Yungarra Island	E8	Green Lake, Outlet Creek
AGRICULTURE	Arable	F1	Various		
	Limited Cultivation Lease	F2	Various		
	Experimental Farms	F4	Wolpup and Kynpup		
EDUCATION		H1	Outlet Creek	H3	Wemen
		H2	Timbaroo	H4	Koorlang
BUSHLAND RESERVES		I1-I123	Various		
WATER FRONTAGE RESERVES		J1-J16	Various		
RECREATION RESERVES		L4, L6-L36	Various		
SCENIC RESERVES		M1	Red Cliffs		
		M2	Timbaroo		
MINERALS AND STONE	Clay	N1	Marble		
	Crystalline Gypsum	N2	Various		
	Powdered Gypsum	N3	Various		
WATER SUPPLY AND DRAINAGE	Water Supply	O1-O22	Various		
	Dryland Water Reserves	O23-O130	Various		
	Drainage	O131-O139	Various		
UTILITIES AND SURVEY	Power Transmission	P1	Various		
	Sewerage Works				
	Aerodromes				
UNCOMMITTED	Gasolignous Oil Production	Q1			
	Military Training	R1	Sunset Country	R2	Big Desert
		S1	Various		



NOTE: THE BASE FOR THIS MAP IS A COMPOSITE OF COUNTY PLANS OF VARYING AGES AND ACCURACIES, AND THE EDGES OF ADJOINING SHEETS MAY NOT FIT EXACTLY. THE BASE SHOWS LAND TENURES WHICH THESE RECOMMENDATIONS PROPOSE TO CHANGE.

