

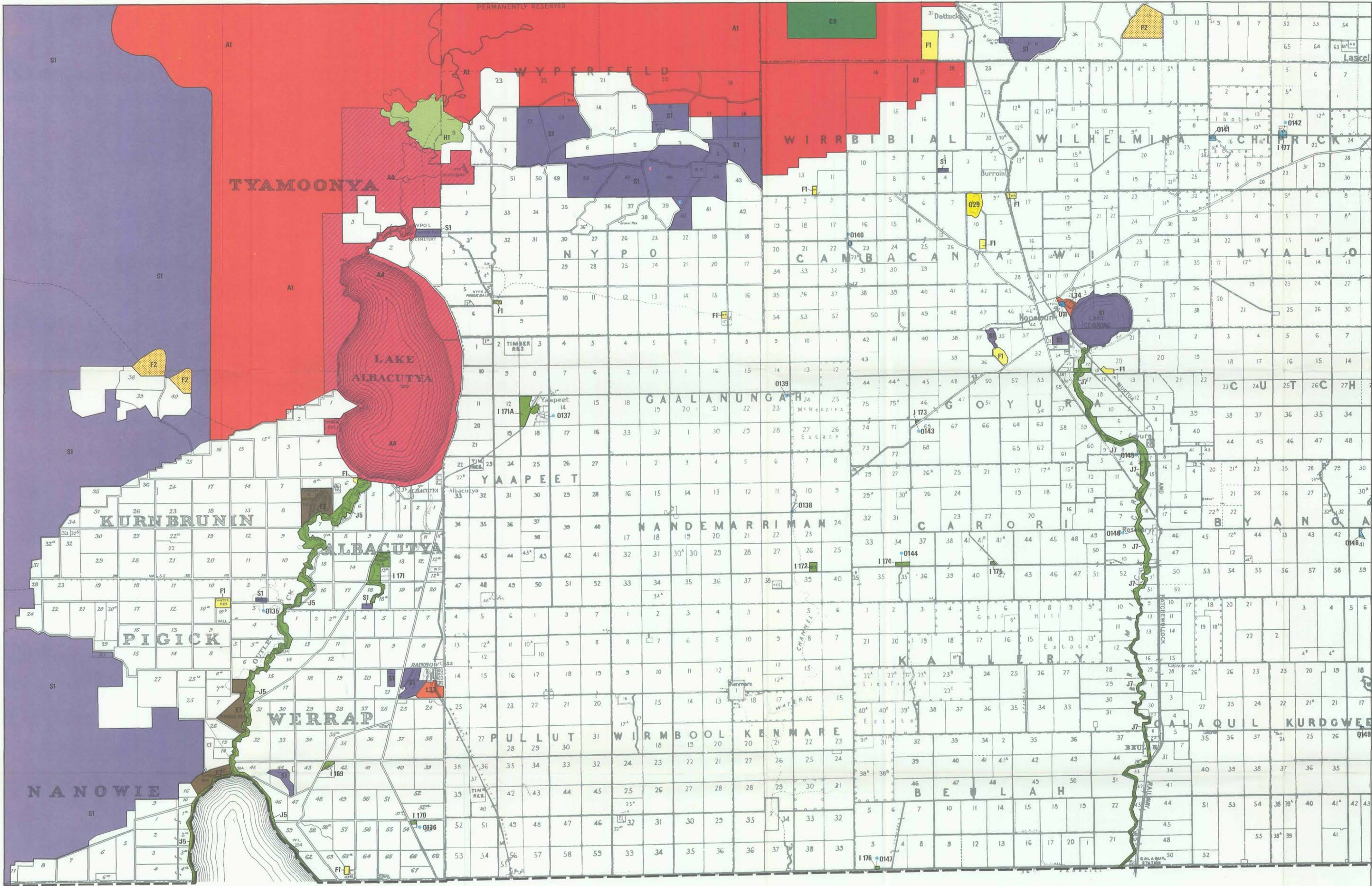
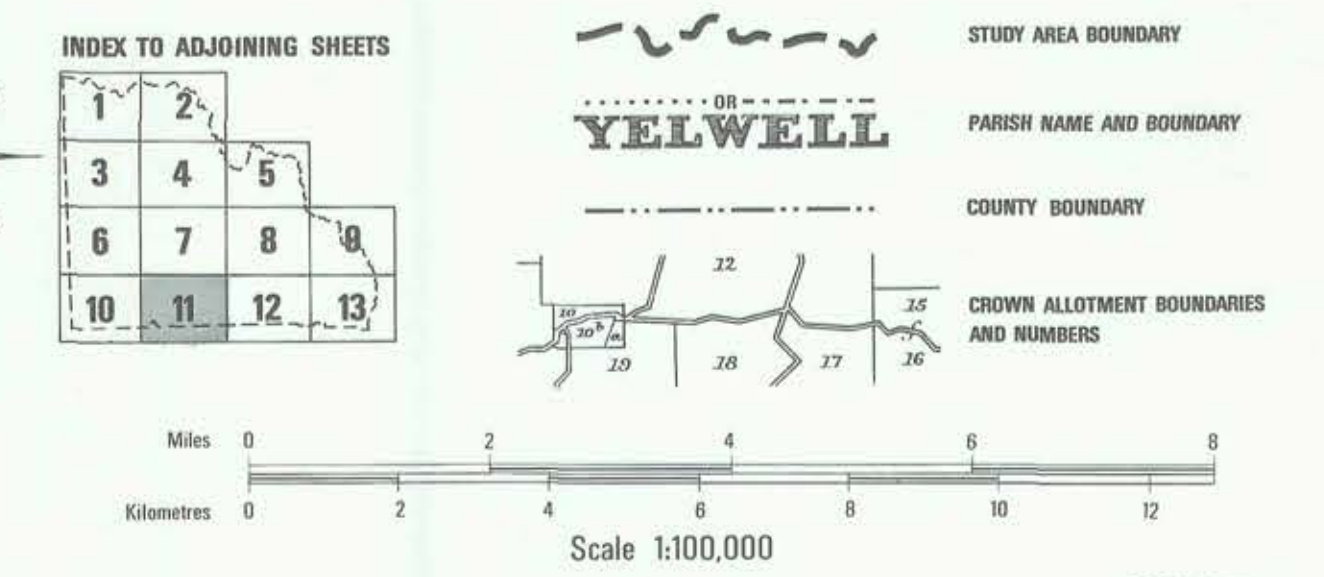
FINAL RECOMMENDATIONS

LAND CONSERVATION COUNCIL  
VICTORIA

MALLEE STUDY AREA

NATIONAL PARKS	A1 Wyperfeld	A2 Hattah-Kalkynne
STATE PARK	A3 Pink Lakes	
REGIONAL PARKS	A4 Lake Albacutya	A5 Kalkynne
WILDERNESS AREA	B1 Big Desert	
REFERENCE AREAS	C1 Millwa C2 Lake Walla Walls C3 Sunset C4 Chalk Creek C5 Kie	C6 Purra C7 O'Sullivan Lookout C8 Lake Jerriwong C9 Dattuck C10 Tolpoo Downs
WILDLIFE RESERVES	D1 Kings Billabong D2 Lakes Powell and Cargill D3 Wandoo D4 Watso D5 Branswing D11 Lake Murphy D13 Wandella	D6 Red Bluff D7 Lake Lalbert D8 The Marshes D9 Durrigook D10 Stevenson Swamp D12 Lake Yanda
FLORA AND FAUNA RESERVES	G1-G33 Various	
HARDWOOD PRODUCTION	E1 Potterwong Creek and Wollpelle Island E2 Abbotford Bend to Bottle Bend E3 Lambert Island to Graces Bend E4 Tarpsie Bend to Banyarick Creek E5 Boundary Bend to Plangil E6 Agpin and Leagher E7 Green Lake and Outlet Creek	
AGRICULTURE	F1 Various F5 Lindsay Point F2 Various F3 Walpoo and Irymple	F6 Robinson F7 Various
EDUCATION AREAS	H1 Outlet Creek H2 Timbaroo	H3 Wemen H4 Koorlong
BUSHLAND RESERVES	I 1-1 211 Various	
PUBLIC LAND WATER FRONTAGES	J1 Arco River J2 Lalbert Creek J3 Loddon River J4 Murray River	J5 Outlet Creek and Lake Hindmarsh J6 Tyrrell Creek J7 Yarrimback Creek
RECREATION RESERVES	L5-138 Various	
SCENIC RESERVE	M1 Red Cliffs	
MINERALS AND STONE	N1 Merbau N2 Various N3 Various	
WATER SUPPLY	O1-O17 Various O18 Tchem Lake (north) O19 Little Lake Chern O22 Wymlet O23-O194 Various	O20 Ruddy Lakes O21 Colless Lake
DRAINAGE	P195-O220 Various	
UTILITIES AND SURVEY	P1 Various	
UNCOMMITTED	S1 Various	

- 1 Wildlife Reserves D11 and D12 are also to be used for water supply purposes, and managed by the Fisheries and Wildlife Division in consultation with the State Rivers and Water Supply Commission.
- 2 Wildlife Reserve D13 is also to be used for hardwood timber production and managed by the Fisheries and Wildlife Division in consultation with the Forestry Commission.
- 3 Reserved forests E8 and E9 are also to be used for conservation of native animals, and managed by the Forestry Commission in consultation with the Fisheries and Wildlife Division.
- 4 Water supply reserves O18-O21 are also to be used for conservation of native animals and managed by the State Rivers and Water Supply Commission in consultation with the Fisheries and Wildlife Division.
- 5 Indicates the existence of a public tank



Lake Hindmarsh