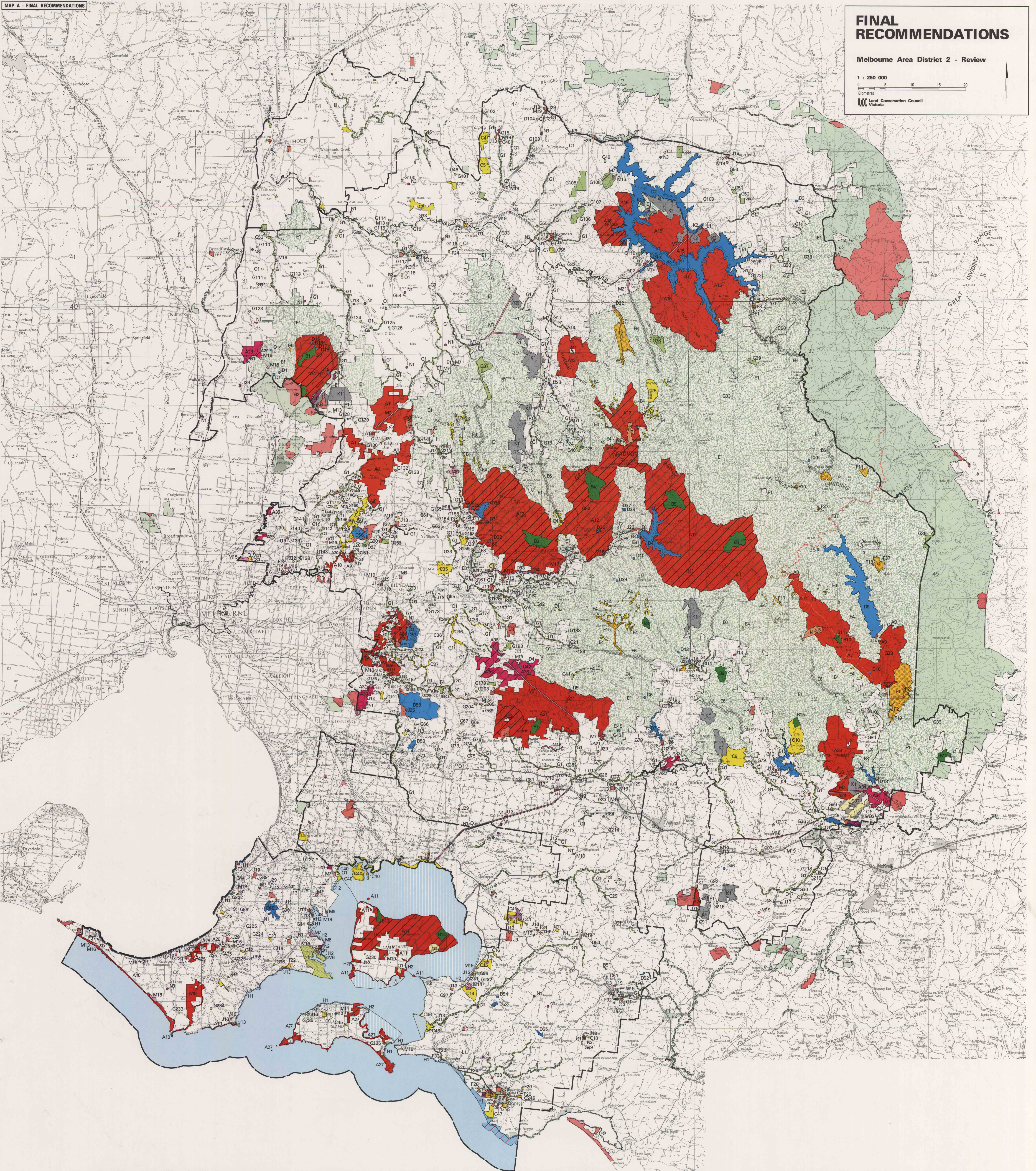


FINAL RECOMMENDATIONS

Melbourne Area District 2 - Review

1 : 250 000
Kilometres
Land Conservation Council
Victoria



Existing land use			New recommendations			Existing land use			New recommendations			Existing land use			New recommendations		
NATIONAL PARKS	A7	Kinglake	A2	Yea River addition to Kinglake	STATE FOREST	E1	Various	FOREST PLANTATIONS	K1	Victorian Plantations Corporation	EARTH RESOURCES	L2	Coal	L1, L3	Stone reserves		
	A5	Dandenong Ranges	A3	Reedy Creek addition to Kinglake		E4	Various (see note 2)		K2	Delatite plantation							
	A7	Baw Baw	A4	Waddy Creek addition to Kinglake		E5	Various		K3	Anderson Creek							
	A10	Nepean	A6	Additions to Dandenong Ranges		E6	Various		K6	School plantations							
			A8	Addition to Baw Baw boundary		E8	Various										
		A11	French Island														
		A12	Ash Ranges														
STATE PARKS	A13	Cathedral Range	A14	Little River addition to Cathedral	HISTORIC AND CULTURAL FEATURES RESERVES	F1	Wahalla	SERVICES AND UTILITIES	M6	Ports	M14	Granville regional tip					
	A15	Eldon	A16	Fraser Park addition to Eldon		F2	Additions to Wahalla		Transport	M7, M8		Easements and installations					
	A18	Warrandyte	A17	Mount Penger addition to Eldon		F3 - F5	National significance areas			Electricity and gas							
	A21	Bunyip	A19	Mount Luff addition to Warrandyte		F6 - F22	State significance areas					Municipal					
	A23	Moondarra	A20	Other additions to Warrandyte		F23 - F33	Regional significance areas						Hospitals and public offices				
		A22	Gembrook park addition to Bunyip	F37	Historical cemeteries	M12	Services	M15	Various								
		A24	Mount Woorh				Water and sewerage										
		A25	Arthurs Seat						Conservation								
										Other							
REGIONAL PARKS	A29	Wandong	A29	Addition to Wandong	NATURAL FEATURES RESERVES	G1	(see note 3)	UNCATEGORISED PUBLIC LAND				N1	Various				
	A30	Lysterfield	A31	Addition to Lysterfield		G5 - G14			LAND NOT REQUIRED FOR PUBLIC PURPOSES				N2	Griff Point			
	A32	Crossover	A33	Addition to Crossover		G33				O1	Various						
	A34	Tyers	A35	Penty Gorge		G34 - G36					O2			Silvan no. 2			
			A36	Kurth Kiln		G45 - G99								O3	Anderson Creek		
						O4	Worthingall										
MARINE PARK		Burnung (see text)			COASTS				PUBLIC LAND OUTSIDE STUDY AREA			Other public land	Not public land as defined in the Land Conservation Act 1970				
REFERENCE AREAS	B1 - B10		B11	Addition to Baw Baw	ALPINE RESORTS	I4	Mount Baw Baw	LAND NOT REQUIRED FOR PUBLIC PURPOSES		N1	Various						
	B12 - B14		B15	Pretty Creek		I7	Additions to Mount Baw Baw Lake Mountain		O2		Silvan no. 2						
						J1 - J8	Other areas				O3	Anderson Creek					
						J10 - J11	Other areas					O4	Worthingall				
						J13	Various										
NATURE CONSERVATION RESERVES	C4 - C18		C19 - C48		COMMUNITY USE AREAS	J20 - J27	Various	PUBLIC LAND OUTSIDE STUDY AREA		Other public land			Not public land as defined in the Land Conservation Act 1970				
						J28	Hastelville Sanctuary		COMMONWEALTH LAND								
											COMMONWEALTH LAND						
												COMMONWEALTH LAND					
														COMMONWEALTH LAND			
WATER PRODUCTION	C50	O'Shannessy Williams Creek	D1 - D60		PARKLANDS AND GARDENS			PUBLIC LAND OUTSIDE STUDY AREA		Other public land			Not public land as defined in the Land Conservation Act 1970				
									COMMONWEALTH LAND								
											COMMONWEALTH LAND						
												COMMONWEALTH LAND					
														COMMONWEALTH LAND			

Notes: 1. Many small reserves such as Community Use and Services and Utilities Areas, particularly buildings in public use and hospitals and public offices cannot be accurately defined at this map scale and are not shown. Other small reserves are indicated by a coloured dot eg. ● 014.

2. The areas of rainbow depicted on this map are indicative only of the general location of the community within State forest. The general extent within parks and other reserves can be derived from the Forest Vegetation map that accompanied the Descriptive Report. These maps do not purport to accurately define the extent of the vegetation community.

3. Not all public land water frontage reserves are shown. They cannot be accurately defined at this map scale, so most are shown as an arbitrary width refer to the appropriate Parish Plan to determine the boundaries of the reserve and whether on one side or both sides of the stream.

4. The coastal reserve extends to low water mark in Port Phillip Bay and on ocean beaches (H1). It extends to 150m seaward from high water mark along the intertidal mudflats of Western Port (H2).

5. The City of Cranbourne and Rural City of Seymour have been declared since the Proposed Recommendations, removing Crown land in those areas from the final recommendations. See Appendix II.