

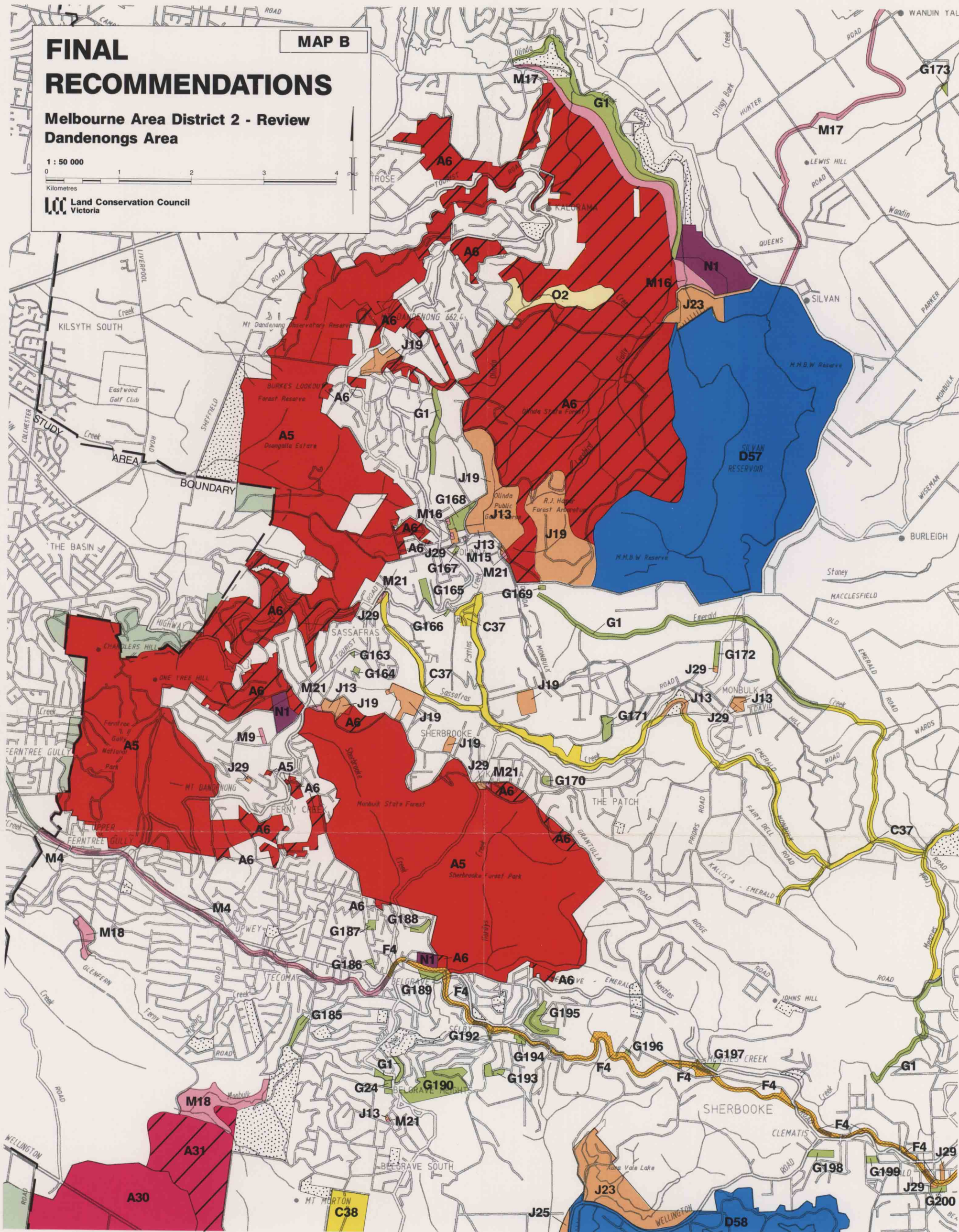
FINAL RECOMMENDATIONS

Melbourne Area District 2 - Review
Dandenongs Area

1 : 50 000

Land Conservation Council
Victoria

MAP B



LEGEND

	Final Recommendations
NATIONAL PARK	A5 Dandenong Ranges
REGIONAL PARK	A6 additions to Dandenong Ranges
NATURE CONSERVATION RESERVES	A30 Lysterfield lake
	A31 addition to Lysterfield
WATER PRODUCTION	C37 Sassafra Creek
	C38 Baluk Willam
HISTORIC AND CULTURAL FEATURES RESERVES	D57 Silvan Reservoir
	D58 Cardinia Reservoir
NATURAL FEATURES RESERVES	F4 Emerald Tourist Railway (Puffing Billy)
	G1 various
	G24
	G163-173, G185-190, G192-200

	Final Recommendations
COMMUNITY USE AREAS	J13 various
	J19 various
	J23 various
	J29 various
SERVICES AND UTILITIES	M4, M9, M15-18, M21 various
UNCATEGORISED PUBLIC LAND	N1 various
LAND NOT REQUIRED FOR PUBLIC PURPOSES	O2
	municipal land
	public land outside study area